



IWTO ACTIVITIES 2019

National Wool Growers Association

90th Annual Congress 2019

General Assembly

Heads of Delegation

President

Executive Committee

Market Intelligence

Contracts & Specifications

Wool Retail Forum

Sustainability

Licensing Panel

Technical Groups

Grower Meeting

Sustainable Practices WG

Wool Sheep Welfare WG

Product Wellness WG

Wool Trade Biosecurity WG

Wool Interiors WG

Technical & Specification Group

Innovation & Technology Forum

Label WG

LCA Technical Advisory Group



Secretary General

Head Office

IWTO EXECUTIVE COMMITTEE



PRESIDENT
WOLF EDMAYR



VICE-PRESIDENT
MICHAEL JACKSON



TREASURER
MIRKO LINDNER



CHRIS WILCOX - AUSTRALIA



MADAME PENG - CHINA



OSMAN KILIC - TURKEY



GIOVANNI SCHNEIDER - ITALY



TUSHAR GURG - INDIA



CRAIG SMITH - NEW ZEALAND



The XIVth International Wool Conference, (London)
June 13th - 17th 1938
Opening Conference. May Fair Hotel

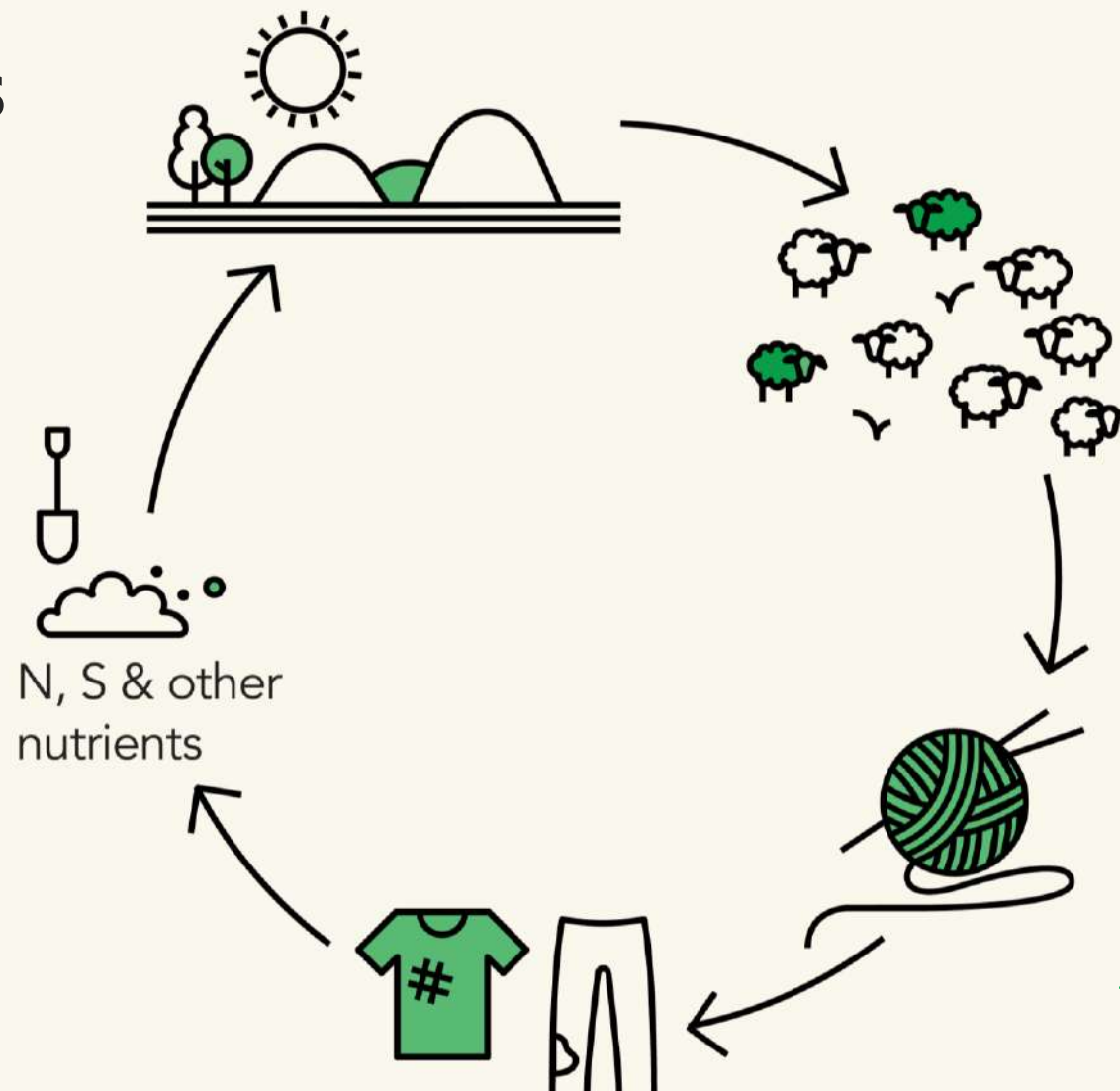
37 IWTO MEMBERS REPRESENT
23 COUNTRIES,
FROM FARM TO FASHION,
SINCE 1930



IWTO EVENTS

ANNUAL CONGRESS = 300 DELEGATES
WOOL ROUND TABLE = 100 DELEGATES

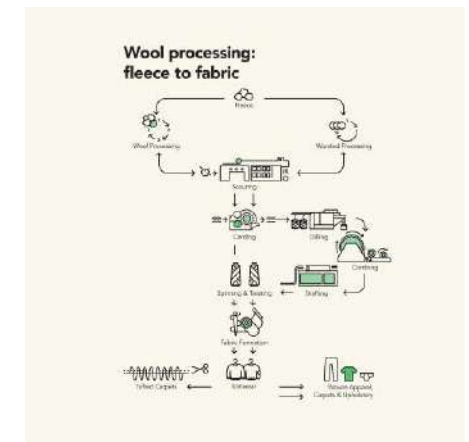
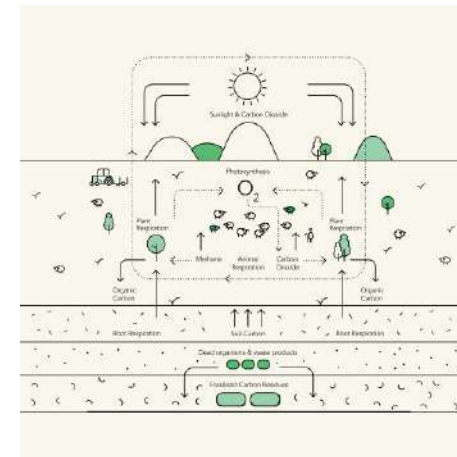
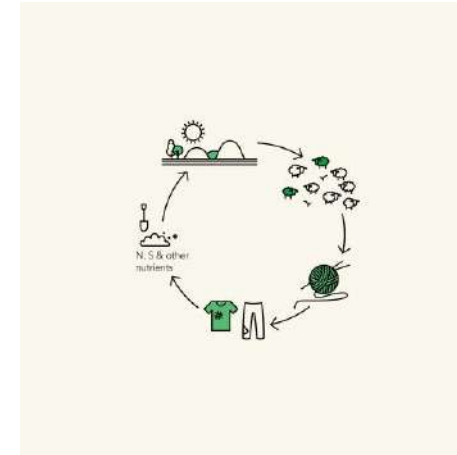
IWTO PUBLICATIONS



**INFOGRAPHICS –
the encyclopedia of
the Millennial**

THE WOOL NOTES 2019

- Funded by the Product Wellness Working Group
- As an introduction to Wool Textiles
- Distributed at Wool Week London and Trade Fairs
- To CSR Managers and Brand Representatives



01



Wool is Biodegradable

Author:
Dr Paul Swan

Nature - the original circular economy

In nature, one life nourishes the next - all biological products are recycled life. In this "original circular economy," the carbon, oxygen, and other molecules which make up all biological life forms, cycle from one form of life to the next.

The key to this continuous recycling process is biodegradation. Through biodegradation micro-organisms in soil or water break down matter, turning a former life form into a new life form.

This cycle has operated since life on Earth began around 3.5 billion years ago, and underpins the fertility of our soils, the cleanliness of our water, and the enormous diversity of life forms on our planet.

IWTO | Wool is Biodegradable

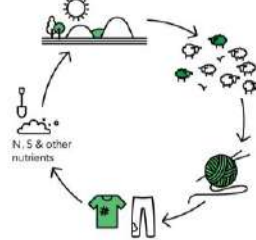
Naturally biodegradable wool is the obvious choice for anyone concerned about the health of our planet.

fertiliser, slowly releasing sulphur, nitrogen, phosphorus and potassium". Tests show that with the ideal conditions, wool products are almost completely degraded after six months in the ground.

Synthetic fibres do not readily biodegrade. Unlike wool, polyesters, nylons, and acrylics have been created by chemists, and only in the last 50 years. These synthetic chemical structures are new to nature, which has not evolved means to recycle them.

Unlike wool, they do not naturally biodegrade. Instead, they miniaturise to micro- and nano-scale, and bio-accumulate. It is these micro- and nanoparticles of plastic which are causing great concern to the medical community, and to environmentalists and mindful consumers around the world.

Biodegradation of Wool



About IWTO

With a world-wide membership encompassing the wool pipeline from sheep to shop, the International Wool Textile Organisation represents the interests of the global wool trade. By facilitating research and development and maintaining textile industry standards, IWTO ensures a sustainable future for wool.



IWTO | Wool is Biodegradable

05



Wool in Marine Environments

Author:
Dr Beverley Henry

A Natural Fibre Solution

One proposed strategy against the problem is to increase the use of natural fibres in apparel. To date, scientific reporting on microfibrils has not included data on microfibrils of natural origin, and the textile industry is seeking evidence that fibres such as wool and cotton do not similarly contribute to pollution of marine environments.

Until research results become available, independent sources provide some confidence that fibres shed during washes of wool clothes are unlikely to

A Global Challenge

Microplastic pollution has emerged as one of the most critical global challenges of our times. It is estimated that 12.2 million tonnes of plastic enter the global marine environment each year. Of this, 3.2 million tonnes are estimated to be primary

IWTO | Wool in Marine Environments

FACT SHEETS
SUMMARY OF SCIENTIFIC PAPERS PUBLISHED ON
WOOL ATTRIBUTES = AVAILABLE TO ALL MEMBERS
DISTRIBUTED TO RETAIL AND CONSUMERS

IWTO Wool Policy Report – No 44 (November 2018)

Welcome to IWTO's monthly overview of the latest policy developments affecting the international wool industry. Published as a service to IWTO members, the Wool Policy Report includes coverage of global economic and trade-related policy developments affecting the international wool industry.

1	<i>Global Economy</i>	1
2	<i>Wool Trade Regulation</i>	1
3	<i>Brexit Update</i>	2
4	<i>News from China</i>	3
5	<i>Growers and Sheep Welfare</i>	3
6	<i>Textiles and Apparel</i>	4

Like what you see? The Wool Policy Report is available on the members-only website as one of the benefits of IWTO membership. If you'd like to have the report delivered to you directly, write to iwto@iwto.org.

1 Global Economy

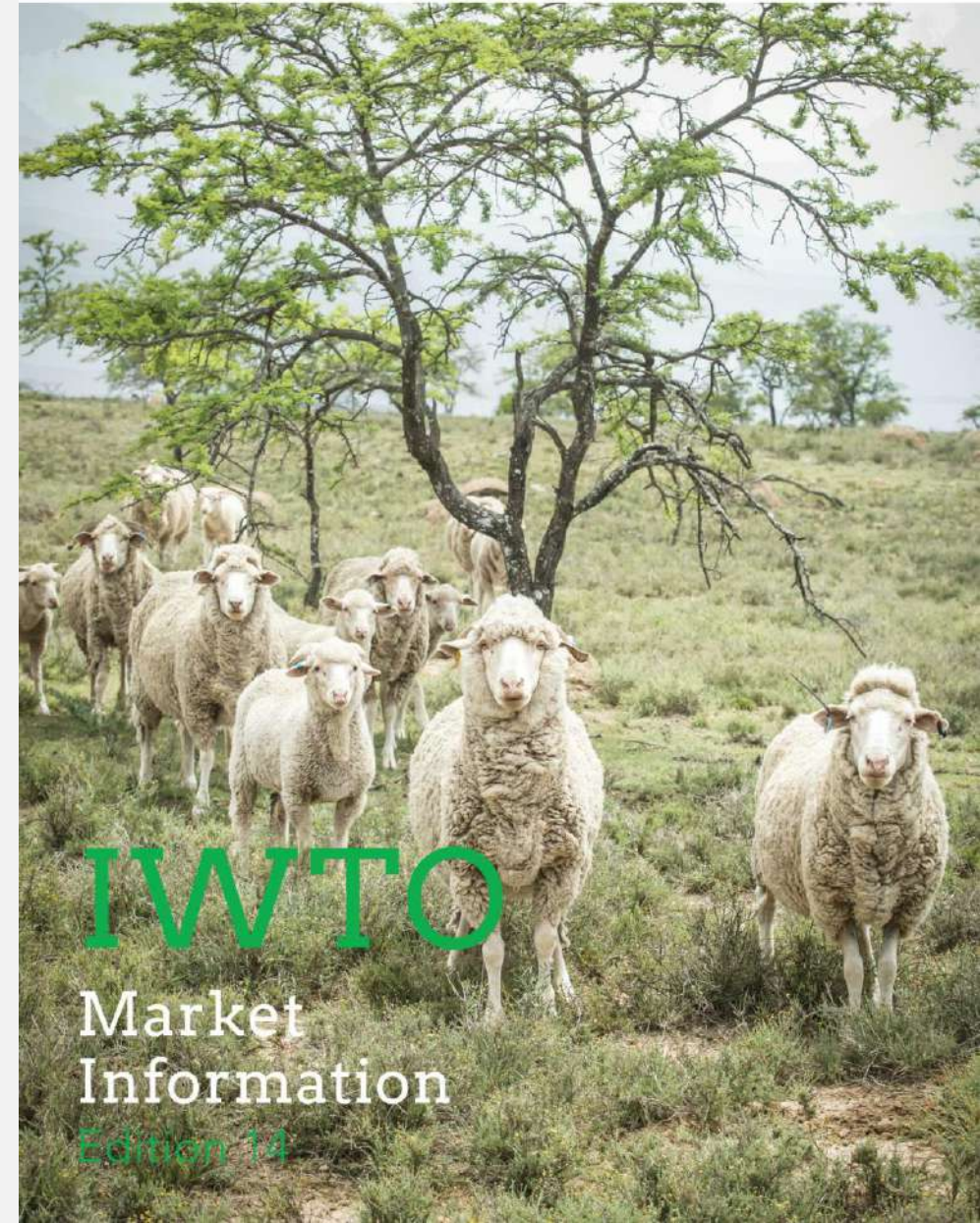
1.1 Australian wool production forecast to shrink by almost 11% in 2018/2019

The Australian Wool Production Forecasting Committee (AWPFC) forecasts Australia's wool production will fall by 10.8% in 2018/2019 as compared to last season ([Sheep Central, 16 November](#), [The Weekly Times, 16 November](#)). The decline in wool production is mainly due to the continued dry conditions in large parts of Australia, lower fleece weights and increased slaughter of sheep. Still, October and early November rain in parts of Australia helped to somewhat improve the overall production outlook. AWPFC's December report was brought forward to give an earlier end-of-year estimate to the markets and the industry

10X WOOL
POLICY
REPORTS/YEAR
= AVAILABLE
TO ALL
MEMBERS

IWTO MARKET INFORMATION

OVERVIEW OF WOOL STATISTICS
AVAILABLE TO ALL MEMBERS



NEWS AND THE TICKER

- Sign up for real wool news on <https://www.iwto.org/news>
- 4x The Ticker to members per year
- Trade Fair reports on the news platform



No. 36 • April/May/June 2018

Dear IWTO Members & Friends,

We hope you enjoyed the recent Congress in Hong Kong. This event is one of the main purposes of our organisation and we strive to offer something for all who attend.

Even if you were unable to join us this year, please do make use of the many resources related to the event:

- The Congress media release can be found at www.iwto.org/news/wool-for-future-markets
- Interviews on the Future of Wool with some of our Young Professionals are up on [IWTO's YouTube Channel](#)
- [This video made at the Congress](#) which captures what makes IWTO events unique

As we move on from the IWTO Congress, we see that sustainability continues to be very much front and centre in fashion and textiles. In May the [#WhatsInMyWash](#) campaign, with the support of the Campaign for Wool, tackled the issue of microfibres that come from synthetic clothing. Single-use plastics are under review by the EU, while the Copenhagen Fashion Summit recently pushed for more action from the industry. How does wool fit into the microfibre issue? Visit these resources on iwto.org:

- [Stemming the Tide - A review of microplastics](#)
- [Wool in Marine Environments Fact Sheet](#)
- [Wool and the Environment Fact Sheet](#)

With best wishes,
The IWTO Team

#whatsinmywash Tackles Microfibre Pollution

UK-based charity Hubbub, supported by the Campaign for Wool, ran the #whatsinmywash campaign earlier this month to raise awareness about the impact of chemical fibres on the marine environment.

"A return to great quality, long lasting clothing made from natural fibres can help remedy this and we would urge the public to check clothes

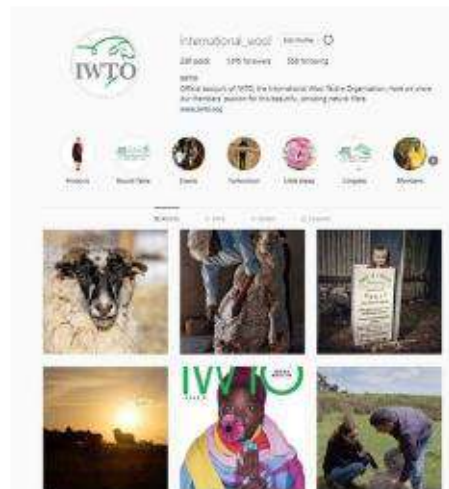




IWTO WEBPAGE 2018

- 48% increase in users from Jan 2018-Jan 2019
- 7% increase in time spent per page
- Most frequently visited pages include
- 1. Definition of Wool attributes
- 2. Caring for Wool
- 3. News and Carbon Sequestration
- 4. Wool and Recycling
- 5. Sponsors/Partners
- 6. Sustainability

IWTO SOCIAL MEDIA



COME WOOL
WITH US ON
INSTAGRAM

@international_wool



TRADE FAIRS AND INDUSTRY MEETINGS JAN-JUNE 2019

HEIMTEXTIL
FRANKFURT

GERMAN
NATIONAL
COMMITTEE

IWTO
CONGRESS
VENICE

EUROCOTON
BRUSSELS

ISPO
MUNICH

DNFI
FRANKFURT

WOOL
INDUSTRY
VISIT
ROMANIA

NWGA
SOUTH
AFRICA

ICNF
PORTUGAL

PREMIÈRE
VISION
PARIS

GERMAN
FASHION
COUNCIL

OIE

OUTDOOR
MUNICH



ITURN GRASS INTO WOOL.WHAT'S YOUR SUPER POWER?

IWTO WORKING
GROUPS –
CURRENT PROJECTS





SUSTAINABLE PRACTICES

IWTO INVESTED MORE THAN 560.000 EURO TO SUPPLY SCIENTIFIC PROOF OF THE SUSTAINABILITY ASPECTS OF WOOL (2011-2019) WITH INDIVIDUAL MEMBER PROJECTS TOTTALLING MUCH MORE (X10)



**Discussion Paper: Analysis of Data
and Methods applied in the SAC MSI
and Associated Tools**

**Prepared on behalf of: Australian Wool
Innovation and the International Wool
and Textiles Organisation (IWTO)**

K. Watson and S.G. Wiedemann
Integrity Ag & Environment
26/11/2018
Stephen.Wiedemann@integrityag.net.au

©2018 Australian Wool Innovation Ltd. All rights reserved. Australian Wool Innovation Ltd gratefully acknowledges
the funds provided by the Australian government to support research, development and marketing of Australian wool.



IWTO has been a member of the Sustainable Apparel Coalition (SAC) for the past 6 years, committed to supply the best possible data on wool's environmental footprint. This document highlights the inconsistencies between the current HIGG Index and the international guidelines and best practices for conducting LCA.

08



PRODUCT WELLNESS

Read more on www.iwto.org

Prickle Versus Allergy

Irritation, itchiness or prickliness is not the same as allergy. Prickle and itch are more accurately called irritation, not allergy. Fabric is composed of fibres. The fibres will be of similar fineness but some will be coarser/finer than others. The prickle sensation generated when fabrics touch skin occurs when the ends of the fibres of a fabric trigger nerves in the skin. These sensations are not specific for wool fibres, but occur across many fibre types.

Coarser fibre ends can press hard enough against the skin to trigger nerve endings known as nociceptors. The triggered nerve will send an electrical signal to the brain. If the brain receives several of these signals from the same local area of the skin, it interprets these as a prickly sensation. Studies show that perception of irritation corresponds to the fineness of a fabric. Eczema sufferers have particularly sensitive skin, often believing they are allergic to wool. However, Australian studies are showing that superfine Merino garments are well tolerated by eczema sufferers and are indeed beneficial, with a reduction in eczema symptoms being seen after 3-4 weeks of changing to superfine Merino based garments. Commercially available superfine Merino has 15-18 micron fibre diameter. Superfine Merino garments are 11.5-15 microns.

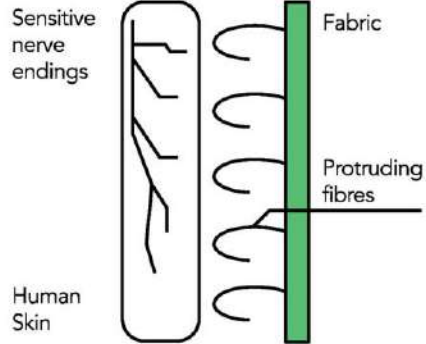


Irritation, itchiness or prickliness is not the same as allergy

Why Some Fabric Feels Prickly

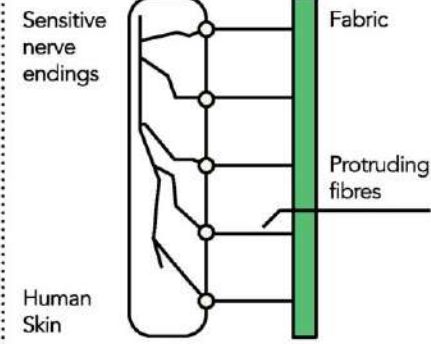
IWTO | Wool & Skin

Superfine/ultrafine Merino wool fibres



Superfine/ultrafine Merino wool fibres bend easily, causing minimal or no skin irritation.

Coarse fibres (e.g. acrylic, nylon, coarser wool)



Coarse fibres have less tendency to bend, causing skin irritation.

Author: International Wool Textile Organisation

Wool & Sleep

A Simple Way to a Good Night's Sleep

Deeper, Longer, Better

Recently, a three-year study conducted at the University of Sydney showed that wool sleepwear promoted faster sleep onset than cotton sleepwear.

Differences in sleep quality also showed that a combination of wool sleepwear

About IWTO

With a world-wide membership encompassing the wool pipeline from sheep to shop, the International Wool Textile Organisation represents the interests of the global wool trade. By facilitating research and





**IWTO TEAM BRUSSELS:
JEANNETTE, DALENA, AMANDA AND BEN**



WOOL ROUND TABLE
QUEENSTOWN, NEW ZEALAND
2-3 DECEMBER

DRAFT PROGRAMME AVAILABLE ON THE EVENT PAGE
AT WWW.IWTO.ORG/EVENTS/2019-WOOL-ROUND-TABLE



THANK YOU – DALENA WHITE

white@iwto.org