

## Biosecurity Plan Introduction

The Healthy Farms Healthy Agriculture (HFHA) Biosecurity Plan is intended to assist producers with developing practical strategies to protect the herd or flock, whether they are backyard chickens, pigs in a hoop house, backyard chickens or multiple species of livestock.

Why have a biosecurity plan for your farm? Diseases can enter unseen and unexpectedly, and some diseases are devastating. Thinking ahead, documenting and implementing methods to prevent disease outbreaks, regularly monitoring animals for signs of disease, and being prepared to respond when an outbreak occurs are all part of good stockmanship, and a smart business investment.

Use the HFHA website and biosecurity assessment checklist prior to writing the plan, to identify the potential risks for introducing infectious disease agents on your farm. The self-assessment checklist will help you reflect on what is being currently done, and what could be added to minimize the risks.



### Table of Contents

- I. Farm Information/Scope of Plan**
  - a. Farm identification
  - b. Premises map
  - c. Emergency contact list
  - d. Biosecurity coordinator
- II. People**
  - a. General biosecurity procedures
  - b. Employee hiring & training
  - c. Visitors
- III. Sanitation**
  - a. Line of separation (LOS)
  - b. Line of separation access points
  - c. Cleaning & disinfection
- IV. Traffic Control**
  - a. Biosecurity entry procedures
  - b. Biosecurity exit procedures
  - c. Animal movement
  - d. Deadstock removal
- V. Animal Management**
  - a. New arrivals & returning animals
  - b. Sick and deceased animals
  - c. Animal contact
  - d. Herd health
  - e. Observation & surveillance
- VI. Farm Security**
- VII. Vermin, Vector and Wildlife Control**
- VIII. Record Keeping Forms**

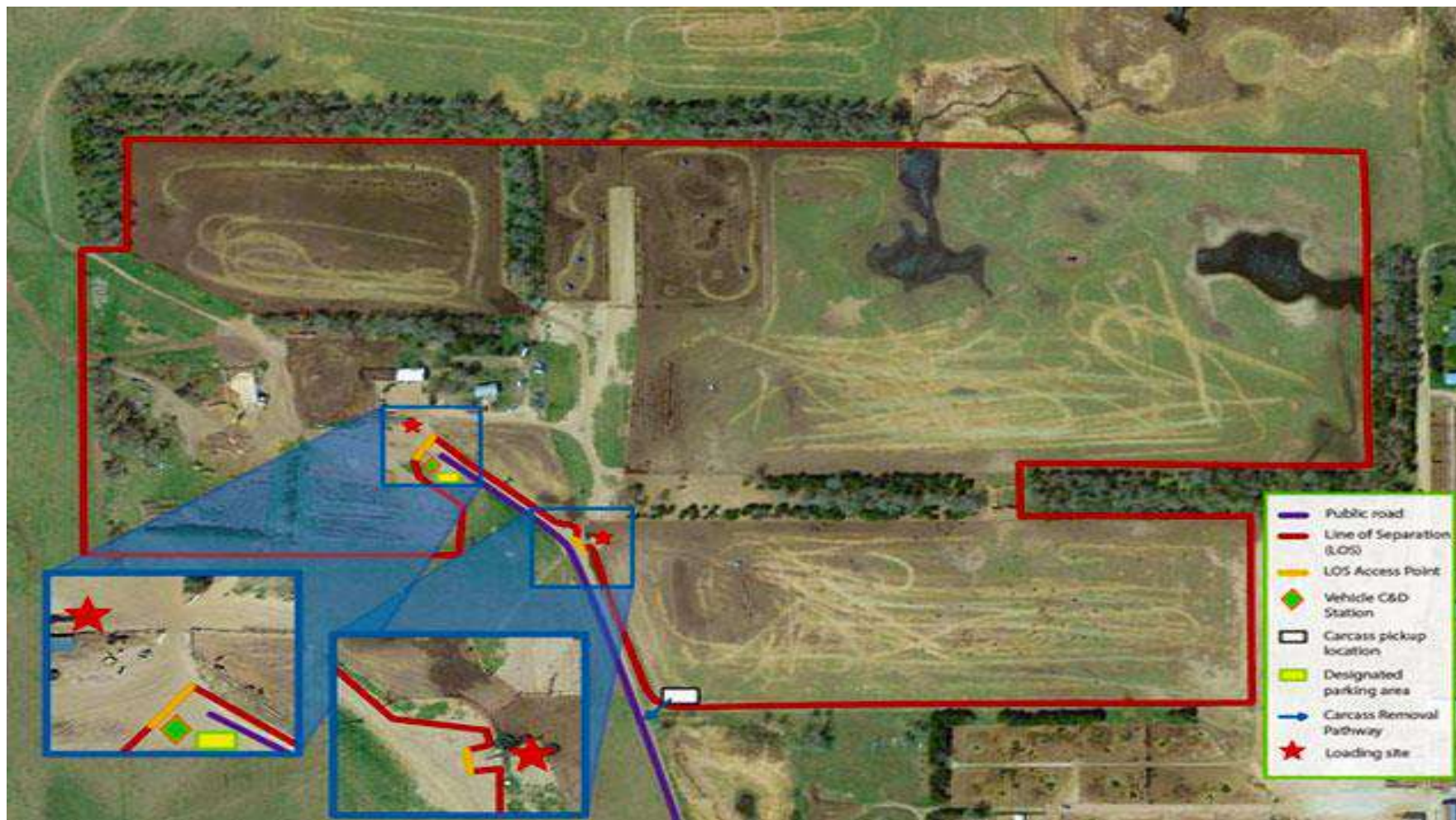
**Farm Information/Scope of Plan**

<b>Date of plan preparation:</b>	
<b>Farm name:</b>	
<b>Premises ID:</b>	
<b>Premises address:</b>	
<b>GPS coordinates if available:</b>	
<b>Secondary premises location(s):</b> <b>*Ask state animal health official if a separate PIN is needed.</b>	
<b>Other business operations on premises? If yes, what?</b>	
<b>List types and number of animals on the premises:</b>	
<b>Animal housing types:</b>	
<b>Other farm premises information:</b>	

## Premises Map

Instructions for creating a premises map can be found on the HFHA website here - <https://healthyagriculture.org/prevent/creating-plan/premises-map-id/>

The map below is an example of a premises map for livestock with outdoor access.



<b>Emergency Contact List</b>			
<b>Name</b>	<b>Phone/Email/Web</b>	<b>Name</b>	<b>Phone/Email/Web</b>
<b>Fire</b>			
<b>Rescue</b>			
<b>Police, Local</b>			
<b>Police, State</b>			
<b>Doctor</b>			
<b>Farm Veterinarian</b>			
<b>State Veterinarian</b>			
<b>Poison Control</b>			
<b>Utilities: Electric</b>			
<b>Utilities: Gas</b>			
<b>Utilities: Heat</b>			
<b>Utilities: Phone</b>			
<b>Insurance Agent</b>			
<b>Bank</b>			
<b>FSA Office</b>			
<b>Neighbors</b>			

### Designate a Biosecurity Coordinator

The designated biosecurity coordinator could be an employee or farm family member. The coordinator should be ready to do the following:

1. Communicate with and/or train employees, visitors, service providers and others on how to follow the farm biosecurity procedures.
2. Review the plan at least annually and update it whenever there are changes affecting biosecurity.
3. Implement the plan if/when there is a disease outbreak locally, regionally or nationally.

<b>Biosecurity Coordinator Name:</b>	
<b>Phone Number:</b>	
<b>Email Address:</b>	

If the biosecurity coordinator is not on the premises, the following person will be the alternate biosecurity contact:

<b>Alternate Biosecurity Coordinator:</b>	
<b>Phone Number:</b>	
<b>Email Address:</b>	
<b>The biosecurity coordinator's contact information is posted here:</b>	

The biosecurity coordinator and alternate coordinator have the authority to ensure compliance with biosecurity protocols and take corrective actions.

### People – General Biosecurity Procedures

<p>The farm positions listed here are trained and reviewed annually about biosecurity procedures necessary to prevent infectious disease agent exposure to livestock.</p>	<ul style="list-style-type: none"> <li>• Owners</li> <li>• Biosecurity coordinators</li> <li>• Essential personnel/employees</li> </ul>
<p>The biosecurity coordinator informs individuals entering the premises of the farm’s biosecurity procedures that they must follow, in a language they understand. Individuals are aware of the biosecurity concepts and procedures that apply to their specific areas of responsibility.</p>	<p>All individuals entering the premises must understand how to:</p> <ol style="list-style-type: none"> <li>1. Contact the biosecurity coordinator.</li> <li>2. Respect the Line of Separation.</li> <li>3. Cross the Line of Separation if required, following entry requirements.</li> <li>4. Perform biosecurity measures for their specific duties.</li> </ol>
<p>Essential personnel must also:</p>	<ol style="list-style-type: none"> <li>1. Understand the importance of biosecurity</li> <li>2. Review the entire biosecurity plan</li> <li>3. Review the labeled premises map</li> <li>4. Know who to report to if they see someone not complying or something preventing compliance.</li> <li>5. Recognize the consequences of not complying with the procedures.</li> </ol>

### Employee Hiring and Training

<p>References are checked for all new employees to:</p> <ol style="list-style-type: none"> <li>1. ensure appropriate skills, responsibility and aptitude</li> <li>2. to exclude applicants with a history of inappropriate workplace behavior</li> </ol>
<p>Employees are trained regularly about the importance of biosecurity and the role they play in maintaining the health and safety of the animals.</p>
<p>Employees are required to inform management if they own livestock at their homes.</p>
<p>Employees, other than veterinarians, are required to report when they visit other animal facilities.</p>

## People - Employee Training Areas

<p><b>Farm security procedures:</b></p> <ul style="list-style-type: none"> <li>Secure premises from intruders.</li> <li>Locking gates, checking fences for breaks.</li> <li>Hazard materials secured in storage for authorized access only.</li> <li>Background check on employees prior to hiring.</li> <li>Procedures for when an employee no longer works on the farm.</li> </ul>	<p><b>Communication:</b></p> <ul style="list-style-type: none"> <li>Explain how employees will receive feedback about their compliance with biosecurity procedures.</li> <li>Identify where will important information will be posted such as emergency procedure instructions and emergency contacts.</li> <li>Train how to talk with visitors about routine biosecurity practices.</li> <li>Ask employees not to talk with the media unless authorized.</li> </ul>
<p><b>Entering and leaving restricted access areas:</b></p> <ul style="list-style-type: none"> <li>What is the Line of Separation?</li> <li>What employees should not bring to work including food products that may carry infectious disease agents (pork products).</li> <li>Policy for farm visitors.</li> <li>Foreign travel: notify owner when planning foreign travel.</li> <li>Vehicle movement on and off the premises: directing vehicles to specific locations outside of the restricted access zone; where the designated parking areas are.</li> </ul>	<p><b>Livestock management:</b></p> <ul style="list-style-type: none"> <li>All animals are monitored daily by workers trained to recognize the signs of disease, and where to report any suspicious disease symptoms.</li> <li>Animals are screened for disease when they arrive at the facility.</li> <li>Healthiest animals are worked first and sick last to decrease cross-contamination.</li> <li>Stacking of stressful events such as handling animals multiple times on the same day is minimized.</li> <li>Clean areas for restraint, treatment and isolation of sick animals.</li> </ul>
<p><b>Cleaning and disinfection:</b></p> <ul style="list-style-type: none"> <li>Clothing.</li> <li>Boot cleaning.</li> <li>Hand washing before and after contact with animals.</li> <li>How to read and follow disinfectant label directions.</li> <li>Personal Protective Equipment.</li> <li>Maintenance of sanitation stations.</li> <li>How diseases are introduced by vehicles, machinery and equipment.</li> <li>How to clean equipment between uses on animals.</li> <li>Vehicle cleaning.</li> <li>Biosecurity procedures for delivery vehicle personnel .</li> </ul>	<p><b>Biosecure management practices:</b></p> <ul style="list-style-type: none"> <li>Manure and feed management: do not step in feed bunks; do not use manure equipment for moving feed.</li> <li>Handling of deadstock.</li> <li>Zoonotic diseases and employee safety.</li> <li>New and returning animals: quarantine.</li> <li>Sick animals: isolation.</li> <li>Checking for rodents and other vermin and their control.</li> <li>Reporting feral animal sightings, observe wildlife intrusions.</li> <li>Control of insect vectors: baits and traps, clear standing water, maintenance of vegetation.</li> </ul>

### People – Visitor Procedures Checklist

	Visitors enter at the main entrance. The entrance is clearly marked with signage.
	All visitors park their personal vehicles in designated visitor parking areas.
	All visitors must sign in and out when visiting.
	Visitors are asked about any foreign travel, and if they had visited another farm recently before your farm visit.
	Visitors going anywhere other than the main office or entrance are accompanied by an employee.
	If visitors must drive a personal vehicle further into the premises, ensure they follow the path designated by an employee.
	Visitors are prevented from driving through manure hauling or feed delivery lanes.
	Visitors are prevented from having contact with livestock and feed unless necessary (e.g., veterinarians and other animal service providers). Inform service providers about your procedures before they enter animal areas.
	Veterinarians and other animal service providers who have contact with animals organize their work from healthy to sick, and youngest to oldest, in addition to wearing Personal Protective Equipment (PPE) if warranted.
	Visitors who have business vehicles that need to enter the premises beyond the visitor parking area (e.g., feed haulers) should follow your biosecurity procedures. Inform service providers about your procedures before they enter livestock areas.
	Visitors wear clean disposable or reusable protective clothing e.g., coveralls, caps, gloves, and clean disposable or reusable boots.
	Visitors wash their hands with soap and water before entering and after leaving the controlled access areas.
	Clean and disinfect all visitor equipment/tools that come in contact with animals or feedstuffs prior to entering, and before leaving, the premises.
	During an animal disease outbreak emergency, all non-essential visit requests will be denied or postponed until the health emergency is over. All essential visit requests (veterinarians, animal health officials, repairmen, vendors), must reviewed to ensure they are essential. All granted visit requests will be strictly monitored and heightened biosecurity measures practiced.

## Sanitation – Line of Separation

### Location

The line of separation (LOS) is labeled on the farm premises map in this plan. The LOS is marked on site with signs, gates, barrier chains, etc.

### Line of Separation Access Points

Entry to the premises is restricted to \_\_\_\_\_ (# of entry points) controlled LOS access point(s) and each is labeled on the premises map. The LOS access points are clearly marked with a suitable barrier of (# of gates/barriers) to restrict entry. Unused driveways that are not LOS access points are protected with (gated, ropes, boulders, etc.) to prevent vehicles and people from entering.

Signs in English/Spanish are posted at all LOS access points that include the biosecurity coordinator's phone number.

All movements (animals, vehicles, equipment and people) across the LOS are recorded. These documents are kept in the \_\_\_\_\_ (insert location) and are available for review.

The designated animal loading/unloading area is labeled on the premises map, and this is not used for a people entry point.

Deliveries that are not essential to the operation are made outside of the LOS at the \_\_\_\_\_ (insert location) and this area is indicated on the premises map, with signage posted at the LOS access point.

Vehicles crossing through the LOS access points are cleaned to remove visible contamination and then disinfected at the cleaning and disinfection station.

People and items crossing through the LOS access points follow appropriate biosecurity steps, described in the biosecurity entry procedures part of this plan.

## Sanitation – Cleaning and Disinfection

### Cleaning and Disinfection Stations

There is/are operational, clearly marked and equipped cleaning and disinfection (C&D) station(s) \_\_\_\_\_  
 \_\_\_\_\_ (insert location) and it is labeled on the premises map. The wash pad for the C&D station is made of (pavement, dirt, etc.) and slopes away from animal housing, feed receiving or storage areas, waterways, and on-farm traffic areas. This operation uses \_\_\_\_\_  
 \_\_\_\_\_ (insert materials/process) to manage effluent from the C&D area, to ensure susceptible animals are not exposed. Effluent from the C&D station is managed following all state and local regulations.

This farm operation has access to all the equipment and supplies needed to successfully operate the C&D stations. The standard operating procedures for the C&D process are available upon request.

The following individuals received documented training in proper selection and use of personal protective equipment (PPE), the principles of cleaning and disinfection to avoid introducing infectious disease agents to the farm, and the area able to effectively operate the C&D stations. They will manage the daily routines for stocking sanitation supplies and personal protective equipment (PPE) and make sure the stations are working properly.

Quality control: These individuals will also inspect people and any vehicles crossing the LOS to ensure that they have cleaned boots or wear boot covers, wear clean clothing and other PPE if necessary, and inspect vehicles for dirt, manure or other contamination on the tires and chassis.

1

2.

3.

In the case of inclement weather (freezing temperatures, thunderstorms or high winds) when the C&D station cannot be operated for vehicles, the following contingency plans must be followed to ensure vehicles do not bring visible contamination onto the farm:

A mobile unit with the power washer, water and disinfectant is stored in the heated shop near the C&D station so that it is functional when needed. Move it out when a vehicle needs to be C&D and back into the shop to prevent it from freezing. In the event of a thunderstorm, the C&D station should not be operated until safe to do so.

**Sanitation – Cleaning and Disinfection**

<b>Cleaning and Disinfection of Vehicles, Equipment, Premises Procedures</b>	<b>Frequency</b>
<p><u>Storage and feed bunk management</u> – Feed for livestock is collected from bunks, bins, bags using dedicated equipment for feed management. Bunks are cleaned between each fill using dedicated equipment. If separate equipment cannot be used, shared equipment is cleaned and disinfected prior to any feed work. Spilled feeds are cleaned up and disposed of immediately. Vermin control efforts are checked regularly.</p>	
<p><u>Water troughs</u> – water troughs are cleaned and disinfected regularly with approved products.</p>	
<p>Pens and equipment are thoroughly cleaned and disinfected before a new group of animals is introduced.</p>	
<p>Equipment that is used with livestock and around their living areas are inspected on a regular basis for contamination including old feed, manure, soil, blood, etc., then cleaned and disinfected.</p>	
<p>Equipment brought in by outside contractors is cleaned before crossing the line of separation/restricted access areas.</p>	
<p>Empty animal transport vehicles are cleaned and disinfected prior to arrival at the farm, or before animals are loaded for delivery to the farm.</p>	

## Traffic Control

### Biosecurity Entry Procedures

All individuals crossing the LOS on this farm must:

- Ensure that the driver area and cargo areas of off-site (not farm-dedicated) vehicles are clean (free of all animal manure/excrement) prior to arrival and has not become contaminated by soiled clothes, footwear, or other items.
- Ensure they have showered and changed into clean clothes and footwear prior to arrival on the operation.
- Workers who live on-site must shower and change into clean clothing/footwear before leaving the house.
- Workers who live off-site must not contact animals, live or dead, or facilities where they are held prior to arrival at the operation.
- Put on operation-dedicated clothing and footwear at the LOS Access Point, or
- Put on clean coveralls/protective outerwear and disposable or footwear that can be disinfected at the LOS access point, when they exit their off-site vehicle on the livestock/flock side of the LOS or prior to stepping into the cab of the farm-dedicated vehicle; and
- Ensure hands are clean
- Sign an employee or visitor arrival agreement verifying they have been informed of these biosecurity protocols and will abide them. The signed agreements are available upon request.

All non-animal handlers and those remaining away from animal areas on this operation must:

- Wear operation dedicated footwear, or
- Wear disposable or cleanable footwear; and
- Ensure hands are clean
  - Wash hands and/or wear disposable or gloves that can be disinfected over clean hands.

### Haying and Harvesting Traffic

A plan is in place to temporarily modify the LOS to create a direct path to the feed storage area for harvest vehicles/equipment that may be transporting feedstuffs during harvest of (hay, corn, etc.). This route is NOT used by vehicles inside the LOS to feed or contact animals.

Access to the feed storage area is from another direction that does NOT cross paths. Visible material on tires and undercarriage will be removed prior to entering the premises, with every effort made to not spray the feedstuffs (hay, silage, grain) carried by the vehicle. Once visible material has been removed, the harvest vehicles/equipment drive directly to the feed storage area.

The drive path is cleaned and disinfected after harvest/feed delivery is complete, ensuring run-off/effluent does not enter animal housing, waterways or traffic areas within the LOS. Once the area is cleaned and disinfected, the line of separation is re-established as it was prior to harvest.

## Traffic Control

### Biosecurity Exit Procedures

Individuals crossing the LOS to the non-livestock side must exit through the LOS access point and remove protective outerwear, disposable footwear, and gloves.

Hands must be washed at the LOS access point.

All soiled clothing is bagged, and laundry done at a sanitation station with laundry facilities. All soiled footwear remains at the sanitation station for cleaning.

### Animal Movement

Animals arriving at or leaving the farm only move in one direction across the LOS at an access point labeled on the premises map. The animal loading/unloading area is not a people entry point. All areas inside the LOS that become contaminated by personnel or animals loading are cleaned and effectively disinfected by trained personnel after loading is complete.

The following individuals have received documented training in proper selection and use of personal protective equipment (PPE), the principles of cleaning and disinfection to avoid introducing infectious disease agents to the farm, and are able to clean and disinfect the loading area:

- 1.
- 2.
- 3.

### Deadstock Removal

This is an area on the farm that is away from livestock housing and on-farm vehicle roads.

The dead animal pickup point meets the following specifications:

- Allows for pick-up without vehicle movement through feed or livestock lanes.
- Is clearly marked.
- Is out of sight from main roadways and neighboring properties or screened by hedges or fencing.

## Animal Management

### **New Animals/Returning Animals**

If the herd is not “closed”, the introduction of new animals must be managed to protect the health of the animals already on the premises. Livestock purchasers for the farm ensure that newly purchased animals come from sellers with detailed records of the origins of their animals. The seller must provide a certificate of health status.

New animals will be inspected on arrival to assess animal health status. Animals will be individually identified as soon as possible after arrival, ensuring identification can be cross-referenced to origin and movement for trace back purposes. Newly arrived animals are isolated for at least two weeks, to ensure that the new animals do not have any diseases.

### **Sick Animals**

Livestock showing signs of disease are isolated immediately from the herd/flock, to prevent contact with healthy animals. Sick animals are provided with a clean, dry, comfortable and reduced stress living area while being treated for illness. The farm veterinarian will be contacted for diagnosis and a treatment plan.

The isolation area will be thoroughly cleaned and disinfected after use.

### **Deceased Animals/Deadstock**

The deadstock area is placed outside of the line of separation, and enclosed to prevent predators, wild birds and vermin from coming in contact with carcasses.

The deadstock pickup location is marked on the farm premises map.

A veterinarian, or other trained person will perform a necropsy on deceased animals that die from suspicious causes. Trained personnel that conduct a necropsy will contact the farm veterinarian if the cause of death is not obvious.

Disposal of deadstock will include pickup from a rendering facility, burial, or on-farm composting unless neurological signs were observed prior to death.

## Animal Management

### Animal Contact

This biosecurity plan will manage animal contact by:

- Not allowing contact between the herd animals and outside animals.
- Providing as much distance between farm livestock and neighboring animals as possible.
- Double fencing the perimeters to minimize nose-to-nose contact.
- Ensuring perimeter fences are maintained to minimize exposure of livestock to wildlife.
- Ensuring internal fences are maintained to minimize accidental mixing of young and older livestock.
- Prohibiting all non-essential visitor contact with animals.
- Ensuring essential visitors (e.g., veterinarians, nutritionists, animal health officials) follow biosecurity guidelines.
- Limiting the sharing of water sources to prevent orally spreading diseases between pens of livestock.
- Keeping water troughs clean on a regular basis to remove algae and organic matter.
- Ensuring adequate space for the number of animals that utilize feed, water, and shade sources.
- Minimize stacking of stressful events (e.g., handling cattle multiple times on the same day).

### Herd Health

Working with the farm veterinarian, a preventative herd health plan will be developed to:

- Observe and monitor for signs of disease.
- Assess the risks for diseases that are endemic, reportable and common.
- Become familiar with disease clinical signs.
- Develop a routine vaccination schedule for each age grouping on the farm.
- Test for diseases.
- Control parasites.
- Identify sickness and response procedures.
- Track treatments and events (like vaccinations and hoof trimming).
- Track nutrition and deficiencies.

## Animal Management - Disease Surveillance

### Observation

1. Livestock are identified with tags for traceability purposes.
2. Observe animals daily for any changes in production levels, behavior, clinical signs of disease, feed and water consumption, and production levels.
3. Look for signs of disease including:
  - a. Loss of appetite.
  - b. Weight loss.
  - c. Lethargic.
  - d. Abnormal behavior.
  - e. Unexplained death.
4. Farm personnel will be trained to report sick animals.
  - a. Staff are encouraged to detect diseases in early stages and observe animals daily.
  - b. Staff monitor daily feed and water intake for signs of illness.
  - c. Staff will immediately alert the biosecurity coordinator or farm owner if they observe signs of illness.
5. Sick animals are to be immediately isolated from the rest of the herd for treatment and continued monitoring of disease progression.

### Surveillance Planning

Records of disease and treatments are reviewed with the farm veterinarian several times a year. If electronic records are not being used, forms at the end of this plan can be printed out and used for tracking.

### Farm Security Checklist

\*On-farm security addresses the intended as well as unintended introductions of disease pathogens to a farm, along with other security threats.

Areas or activities on the premises that are vulnerable and should have increased security measures have been identified.

Insurance coverage is in place that protects against theft, vandalism, pesticide spills, and/or terrorist attacks.

911 emergency address posted and easily visible on your mailbox, or a post on the road.

Procedures are established and communicated to farm employees and family so they know what to do in case of an emergency.

There is an up-to-date list of contact names and numbers in case you are away from the farm or incapacitated during an emergency. The farm family and employees know where to find this list.

There is a permanently installed, well-hidden mailbox or lock box that serves as an emergency information box for emergency personnel to access. They have been informed about where it is located.

A farm map with the contents of each building listed has been created and stored in a secure location.

Pesticides and farm chemicals stored and secured in one location. An inventory management policy has been created to keep track of all chemicals on a regular basis.

Types of breathing equipment that may be required for protection from dangerous or deadly chemicals are on hand for farm personnel. Biohazard suits required to deal with certain chemicals in case of an accident or fire are available for personnel.

Advanced emergency response procedures have been created. A liaison with the local police and fire department has been identified to call quickly and safely in the event of an emergency.

The local fire department has visited the farm for a safety and security check.

All areas requiring physical security are locked or gated. Locks, fences and gates are inspected on a \_\_\_\_\_ basis for tampering or other damage.

Lighting is located in areas that need extra security.

**Rodent, Wildlife and Vector Control**

The following control measures are in place to minimize interaction between livestock and other animals (deer, feral pigs, rodents, dogs, cats, etc.), and to control vectors such as insects, ticks, flies and other external parasites.

Tasks	Staff Name	Frequency
A designated individual is responsible for implementing the rodent control plan.		
Rodent control bait is checked weekly and replaced as needed.		
Weeding and grass control is done around the building perimeter of animal housing areas.		
Cleaning of general office areas; trash removal scheduled.		
Dog, cats and other pets are not allowed to roam in livestock living areas.		
Wild bird control: do not allow spilled feed around feed areas.		
Deer: perimeter fencing is eight feet in height; gates are kept closed.		
Fences are inspected for damage and repaired when needed to control feral animals.		
Check for and remove standing water or treat with a larvicide to control mosquitos.		
Check fly baits and traps and replace as needed.		
Examine animals (and people) for ticks; assess the best tick control product to use.		
Check for and remove spoiled feed and other rotting organic matter.		
Assess levels of insect vectors and use biological and/or chemical controls.		

<b>Record Keeping Forms</b>	
<b>Form Title</b>	<b>Use</b>
Blank Emergency Contact List	Enter emergency contacts and place in an easy to access location.
Employee Biosecurity Risk Factors Form	Questionnaire for potential employees regarding off-farm interactions with livestock
Employee Training Record	Tracking form for employee biosecurity training
Vehicle and Equipment Entry Log	Form for logging vehicle and equipment entry onto the premises
Visitor Entry Log	Tracking visitor entry onto the premises
Livestock Receiving Record	Tracking new arrivals and return arrivals of livestock
Livestock Movement Record	Log for tracking animal movement
Livestock Health Record - Animal	Health record tracking for cattle, sheep, goats, horses, etc.
Livestock Health Record – Poultry Flock	Health record tracking for poultry
Livestock Vaccination Record	Optional form for tracking only livestock or poultry vaccinations



**Employee Biosecurity Risk Factors Form**

	Yes	No	Add more Information if needed
1. Do you have regular contact with other livestock or poultry of your own or at other premises, livestock markets, processing plants or livestock slaughtering facilities? If yes, what premises?			
a. If yes, do you clean and disinfect your vehicle inside and out?			
b. If yes, do you change outer clothes? When?			
c. If yes, do you disinfect footwear or change into footwear assigned to the premises? When?			
2. Do you have livestock at your home? If yes, what kind?			
3. Do you live with someone who works at another livestock premise, dairy, swine/sheep/goat operation, livestock market, processing plant, slaughter facility or rendering plant?			
a. If yes, what premises?			
b. If yes, do other people who reside at your home and at a livestock operation follow biosecurity procedures?			
4. Do you work at any other livestock premises?			
a. If yes, where?			
b. What is your job description?			
5. Have you traveled outside of the United States or do you plan to travel in the next year?			
a. If yes, where did you travel or where do you intend to travel?			



### Vehicle and Equipment Entry Log

Farm Name: \_\_\_\_\_

Farm Premises ID: \_\_\_\_\_

Contact Name: \_\_\_\_\_

Phone: \_\_\_\_\_

Date	License Plate # & State	Driver Name	Driver Phone #	Vehicle Description	Reason for Entry	Cleaning and Disinfection on site?	Initials of Person Supervising Entry
						Yes No	
						Yes No	
						Yes No	
						Yes No	
						Yes No	
						Yes No	
						Yes No	

### Visitor Entry Log

Farm Name: \_\_\_\_\_

Farm Premises ID: \_\_\_\_\_

Contact Name: \_\_\_\_\_

Phone: \_\_\_\_\_

Date MM-DD-YY	Name	Company	Phone #	Reason for Entry	Date and Description of Last Livestock Contact - Farm, auction, etc. w/ city, state or foreign country

### Livestock Receiving Record

Date	Animal ID	Age	Breed	Sex	Source	Transport Method/Company	Employee Initials



### Livestock Health Record – Individual Animal

Farm Name		Premises ID		
Farm Contact Name		Animal/Herd/Flock ID		
Date of Birth	Maternity (Dam)		Paternity (Sire)	
Date of Purchase	Source, Age, and Other Information			
Date of Sale	Buyer		Sold as Organic? Y/N	
Date of Death	Cause of Death			
Vaccinations and Veterinary Biologics				
Date(s)	Material(s)			
Physical Alterations (castration, branding, ear notching, etc.)				
Date(s)	Procedure(s)			
Medications/Remedies/Supplements				
Date(s) Administered	Product(s) (including parasiticides)		Reason for Use	
Breeding and Reproduction				
Date(s)	Breeding Info. (natural/AI)	Pregnancy Checks	Birthing (freshening)	Offspring ID

### Livestock Health Record – Poultry Flock

Farm Name	Premises ID	Flock ID/Location
Hatch Date	Number Purchased	Date of Purchase/Delivery
Source		
Layers		
Date Egg Laying Began		
Meat Birds		
Date of Harvest of Meat Birds		
Date of Sale	Buyer	Sold as Organic? Y/N
Vaccinations and Veterinary Biologics		
Date/By Whom? (hatchery or farm)	Material(s) Administered	
Physical Alterations (castration, beak trimming, spur removal, etc.)		
Date(s)	Procedure(s)	
Medications/Remedies/Supplements		
Date(s)	Product(s)	Reason for Use
Culling/Mortality Incidents		
Date(s)	Explanation	

### Livestock/Poultry Vaccination Record

Farm Name: \_\_\_\_\_

Premises ID: \_\_\_\_\_

Contact Name: \_\_\_\_\_

Phone: \_\_\_\_\_

Date	Animal Number	Diagnosis/Treatment	Product & Manufacturer	Lot#/Serial #	Dose	Earliest Withdrawal Date	Treatment Administrator

## Basic Steps for Responding to a Suspected Emergency Livestock Disease

<b>Identify a Disease</b>	<b>Contact the Veterinarian</b>	<b>Isolate and Communicate</b>	<b>Control Movement</b>
<p>Establish criteria that indicates when an animal has a reportable disease.</p> <p>Next steps if an animal appears to be sick.</p>	<p>The farm owner or responsible employee consults with a veterinarian to determine the cause of sickness, and potential treatment and management options.</p>	<p>If the disease is easily spread and exposure of other animals is likely, remove the animal from the herd to an isolation area for treatment.</p> <p>Inform farm personnel about the animal's condition and treatment plan, and to be aware of other animals that could show signs of illness.</p>	<p>Implement movement controls for other animals, people, equipment and materials as appropriate to reduce the disease spread.</p>