

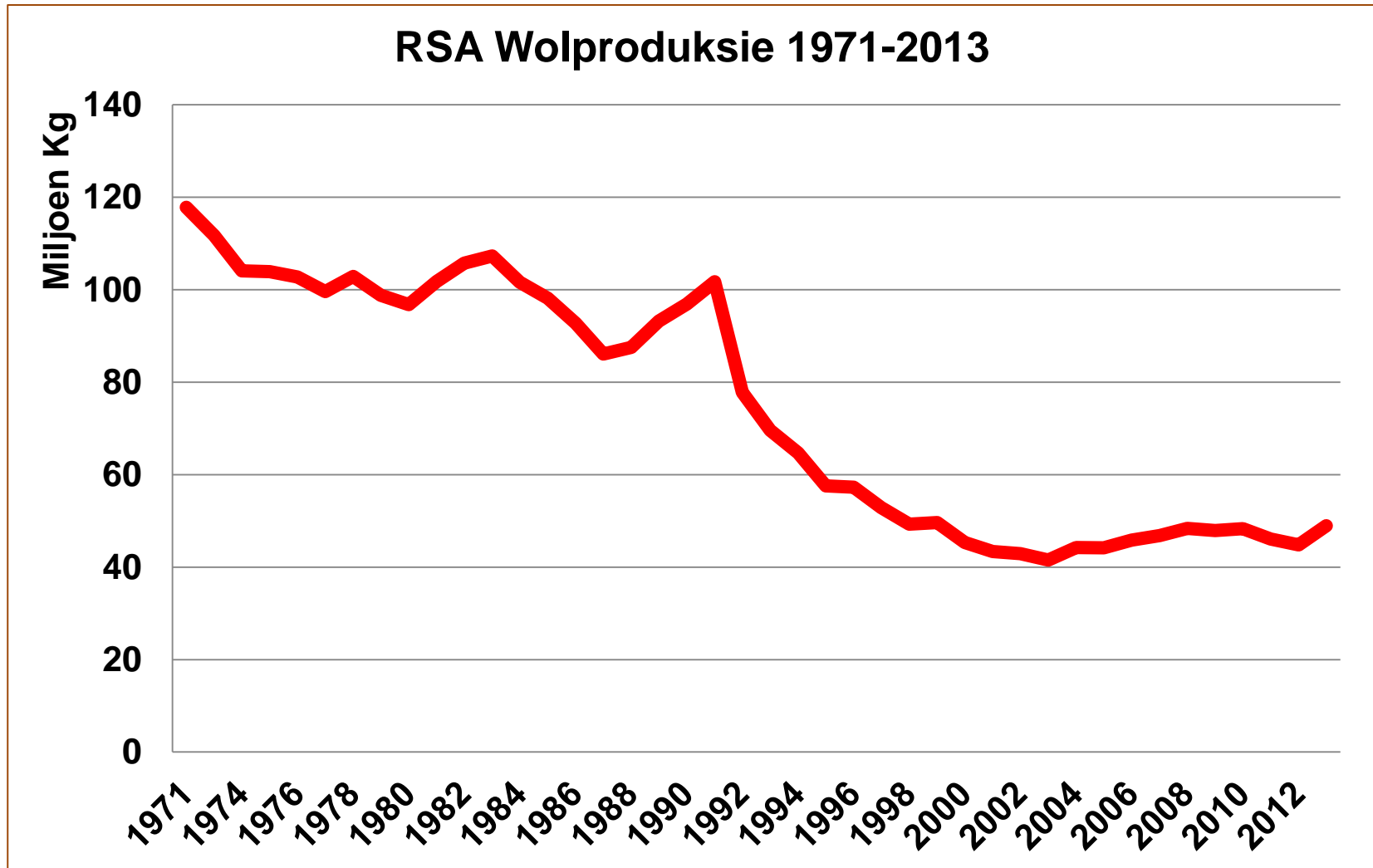
Wolproduksie tendense in die NK



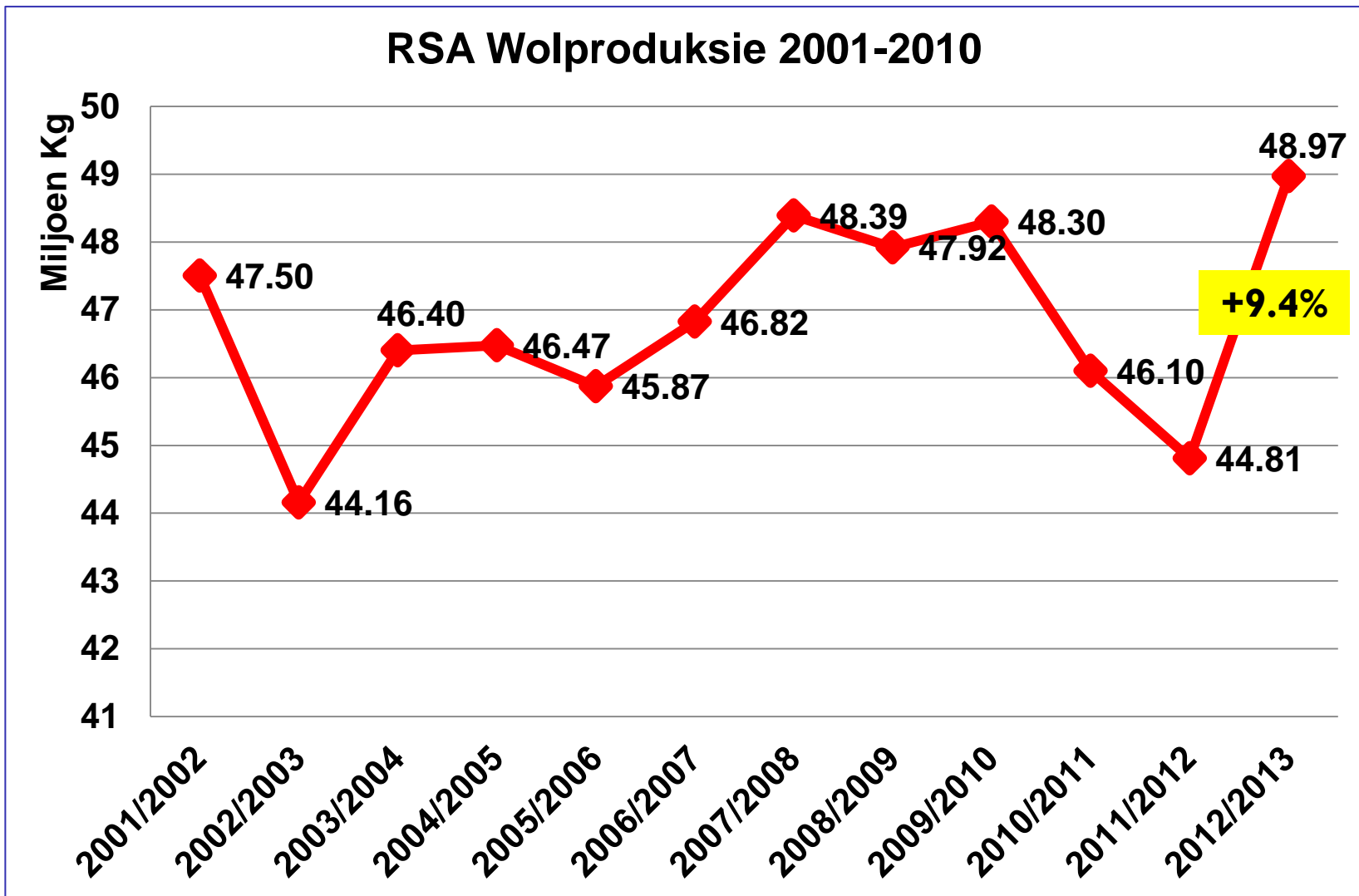
NK Kongres
Victoria-Wes
12 Februarie 2014



RSA Wolproduksie

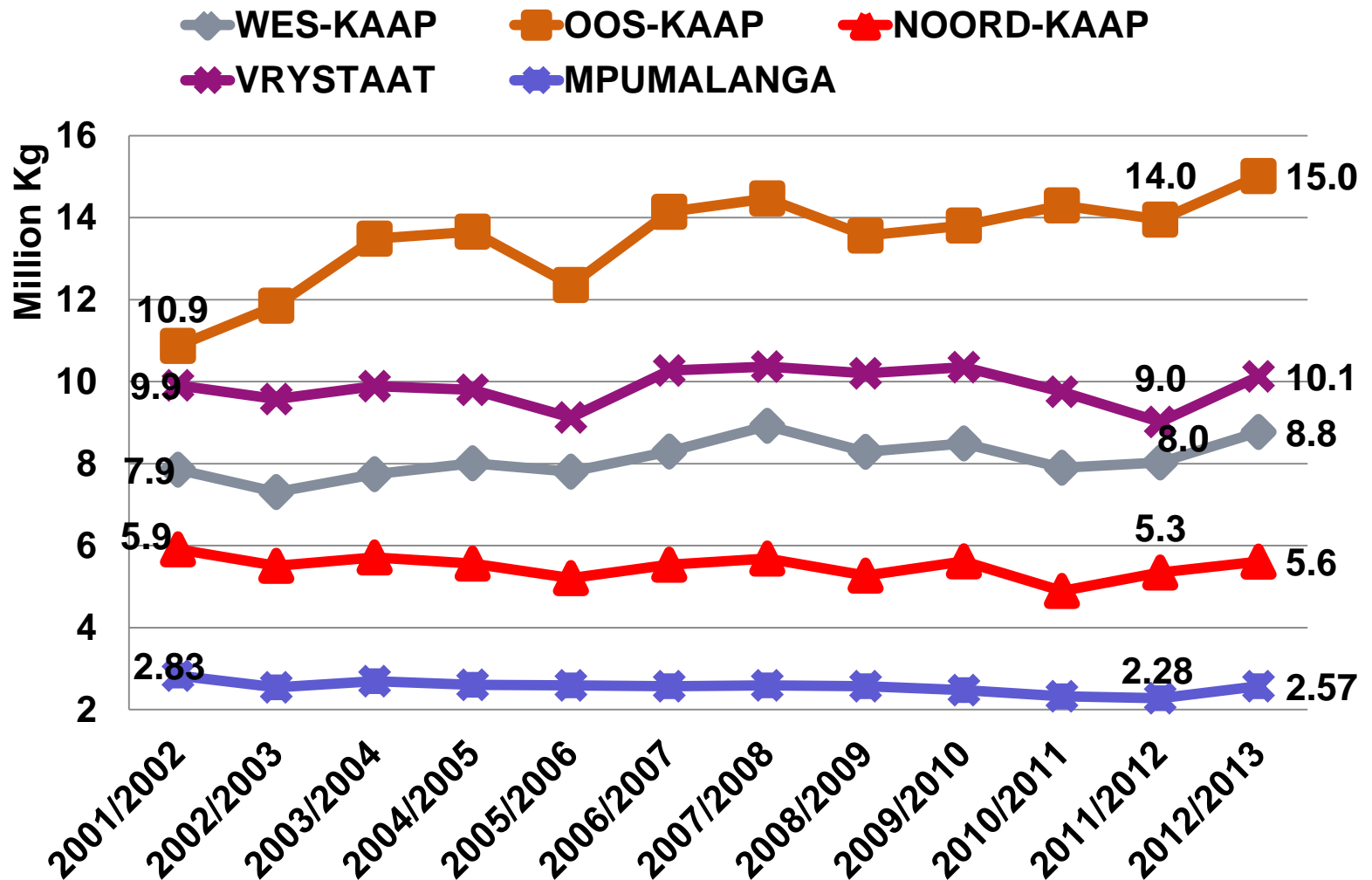


RSA Wolproduksie

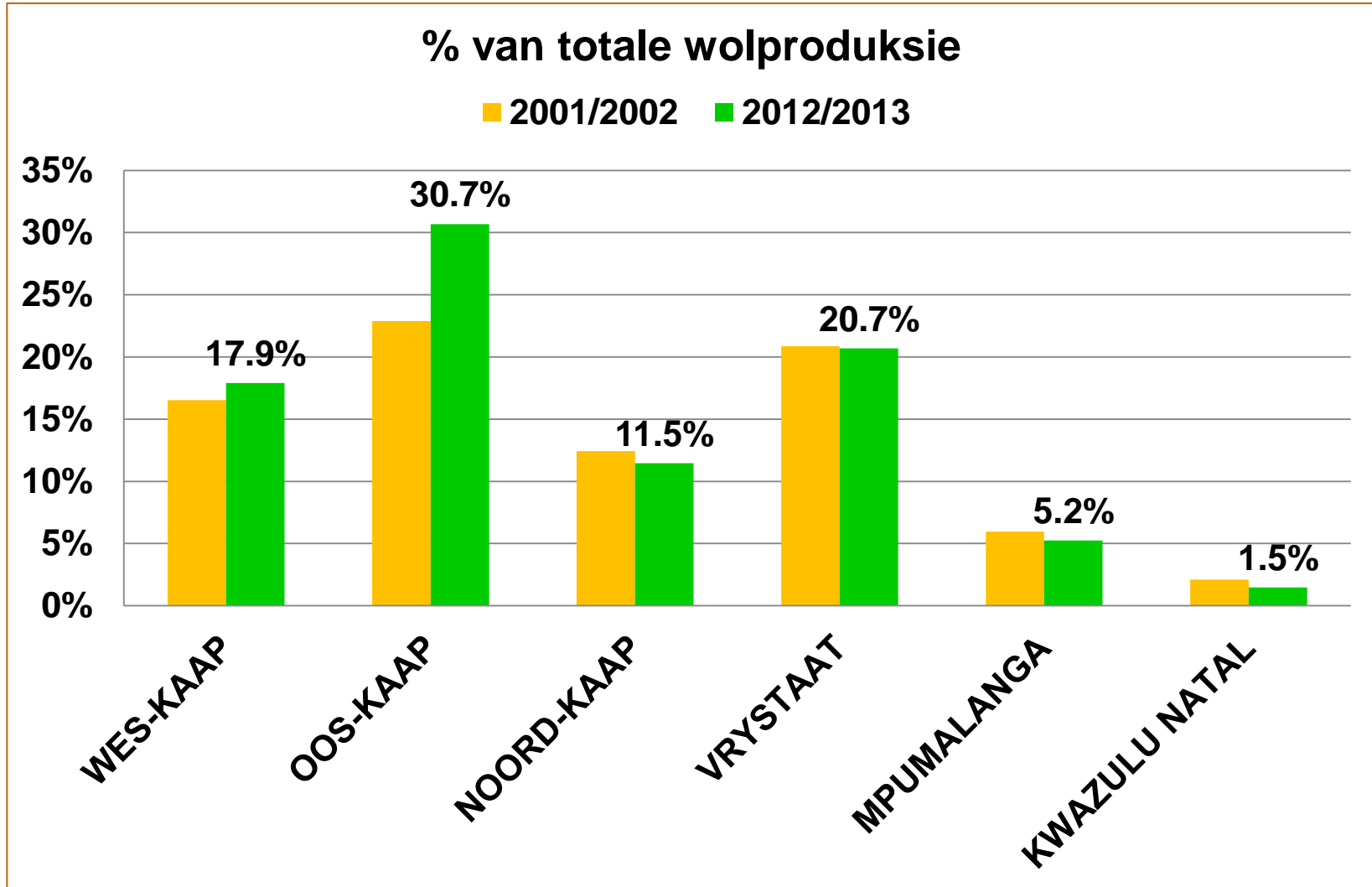


Provinsiale wolproduksie

Wolproduksie (Kg) per provinsie



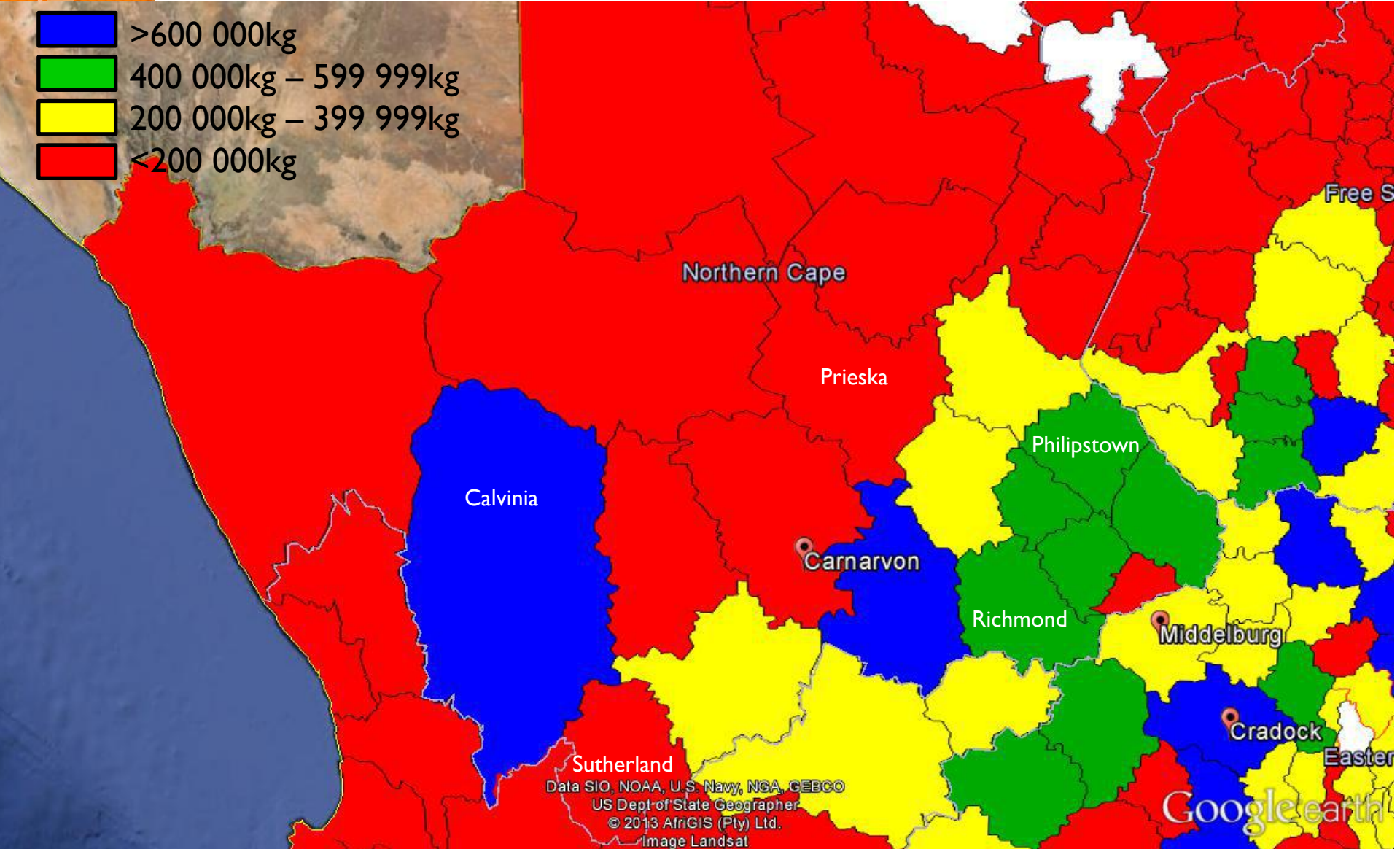
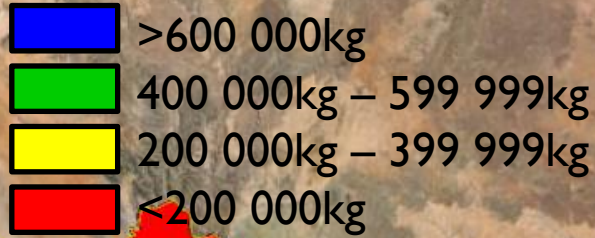
Provinsiale wolproduksie



Provinsiale skeerselontleding

Provinsie 2012/2013	Realisasie waarde	Vetwolprys	Mikron	Skoonopbrengs	Lengte
	Rand	R/Kg	μ	%	mm
OK	693 611 842	53	20.5	60.6	60
VS	482 995 695	53	21.3	60.8	61
GP	7 487 181	44	22.5	60.9	59
KZN	30 341 947	55	21.5	61.9	63
Lim	396 839	59	20.2	59.8	58
MP	126 839 767	55	21.1	60.1	64
NK	303 486 659	58	20.6	64.7	60
NW	14 844 651	38	22.6	55.3	56
WK	404 121 134	55	21.2	63.3	57
Totaal	2 299 690 404	52	21.0	60.5	59

NK wolproduksie distrikte



NK Top 15 distrikte

Nr	Distrik hoog na laag	2012/2013	%
1	VICTORIA-WES (2)	897 637	16.00%
2	CALVINIA (1)	670 341	11.95%
3	COLESBERG (5)	514 814	9.18%
4	HANOVER (7)	484 579	8.64%
5	RICHMOND (4)	480 679	8.57%
6	DE AAR (6)	431 693	7.70%
7	PHILIPSTOWN (3)	408 784	7.29%
8	BRITSTOWN (8)	394 038	7.02%
9	FRASERBURG (9)	345 823	6.16%
10	HOPETOWN (14)	202 150	3.60%
11	SUTHERLAND (10)	195 699	3.49%
12	NOUPOORT (12)	187 231	3.34%
13	CARNARVON (11)	161 241	2.87%
14	PRIESKA (15)	78 174	1.39%
15	WILLISTON (13)	68 523	1.22%

(#) – posisie tydens
2001/2002 seisoen

Wolproduskie per produsent

Provinsie 2012/2013	Aantal Produsente	Wolproduksie/Produsent	% Produsente
	Aantal	Kg/produsent	%
OK	2 008	5 390	19.8%
WK	1 740	5 041	17.2%
NK	967	5 801	9.5%
VS	3 377	2 998	33.3%
MP	1 046	2 453	10.3%
KZN	372	1 923	3.7%
Limpopo	13	695	0.1%
GP	114	2 388	1.1%
NW	489	1 438	4.8%
Tot kommersieël	10 126	3 910	100.0%
Ciskei	116	2 145	11.60%
Transkei	884	3 635	88.40%
Tot komunaal	1 000	3 462	100.00%
Tot RSA	11 126	3 870	

Wolproduksie per produsent

Noord-Kaap	Wolproduksie	Aantal Produsente	Wolproduksie/Produsent
	Kg	Aantal	Kg/produsent
Victoria-Wes	897 637	131	6 852
Calvinia	670 341	157	4 270
Colesberg	514 814	69	7 461
Hanover	484 579	52	9 319
Richmond	480 679	70	6 867
De Aar	431 693	51	8 465
Philipstown	408 784	63	6 489
Britstown	394 038	48	8 209
Fraserburg	345 823	63	5 489
Hopetown	202 150	34	5 946
Sutherland	195 699	75	2 609
Noupoort	187 231	24	7 801
Carnarvon	161 241	43	3 750
Prieska	78 174	17	4 598
Williston	68 523	19	3 606
Totaal	5 609 529	967	5801

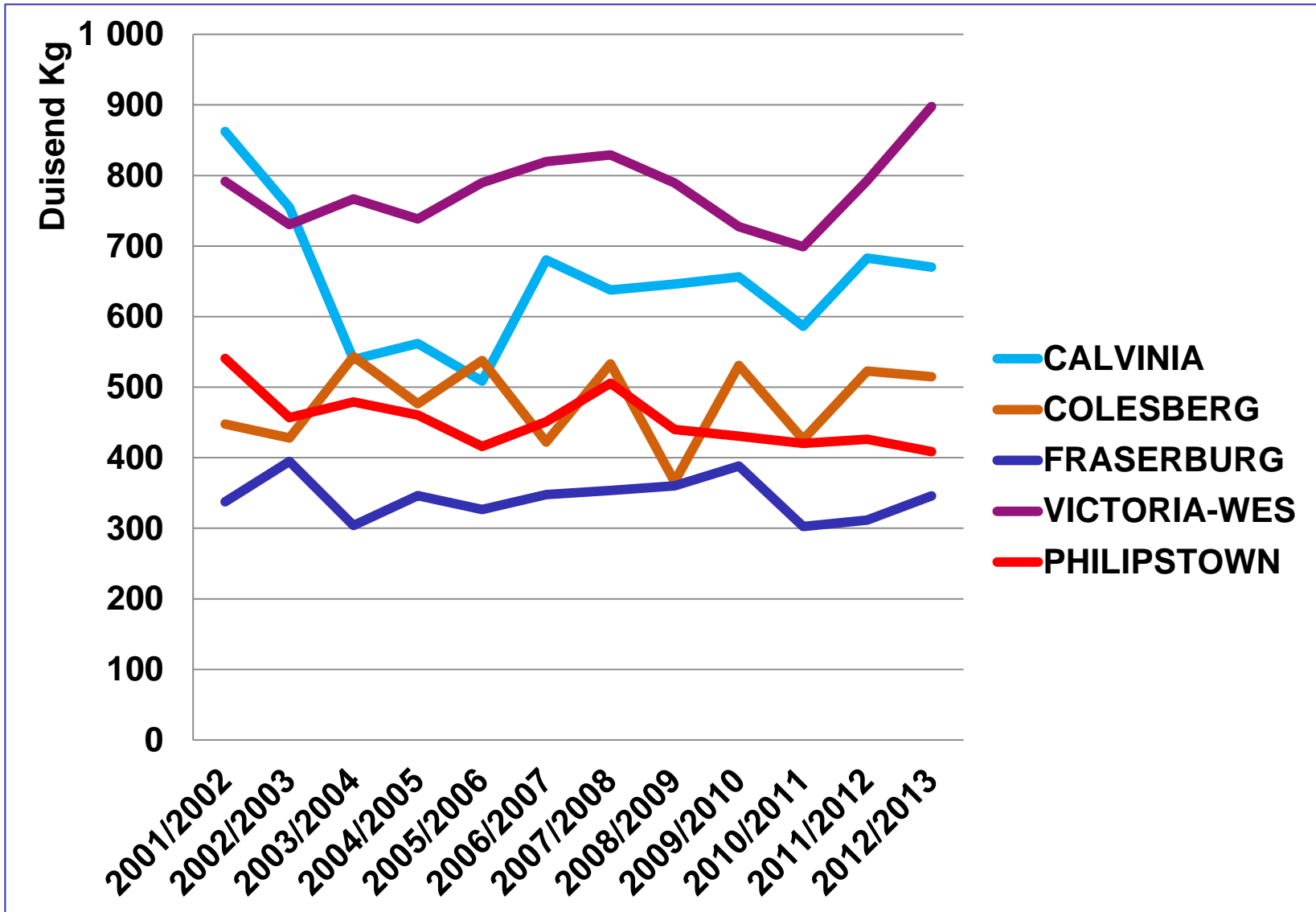
Wolproduksie per hektaar

Provinsie	Oppervlakte	Wolproduksie/ha	% Hektare
	Ha	Kg/ha	%
OK	16 750 187	0.896	16.2%
WK	12 857 308	0.682	12.4%
NK	35 128 214	0.134	34.0%
VS	12 966 701	0.781	12.5%
MP	7 322 976	0.350	7.1%
KZN	6 788 536	0.105	6.6%
Limpopo	5 479 055	0.002	5.3%
GP	1 474 807	0.186	1.4%
NW	4 687 048	0.150	4.5%
Tot kommersieël	103 454 832	0.415	100.0%
Ciskei	668 323	0.372	14.55%
Transkei	3 924 510	0.358	85.45%
Tot komunaal	4 592 833	0.360	100.00%
Tot RSA	108 047 665	0.412	

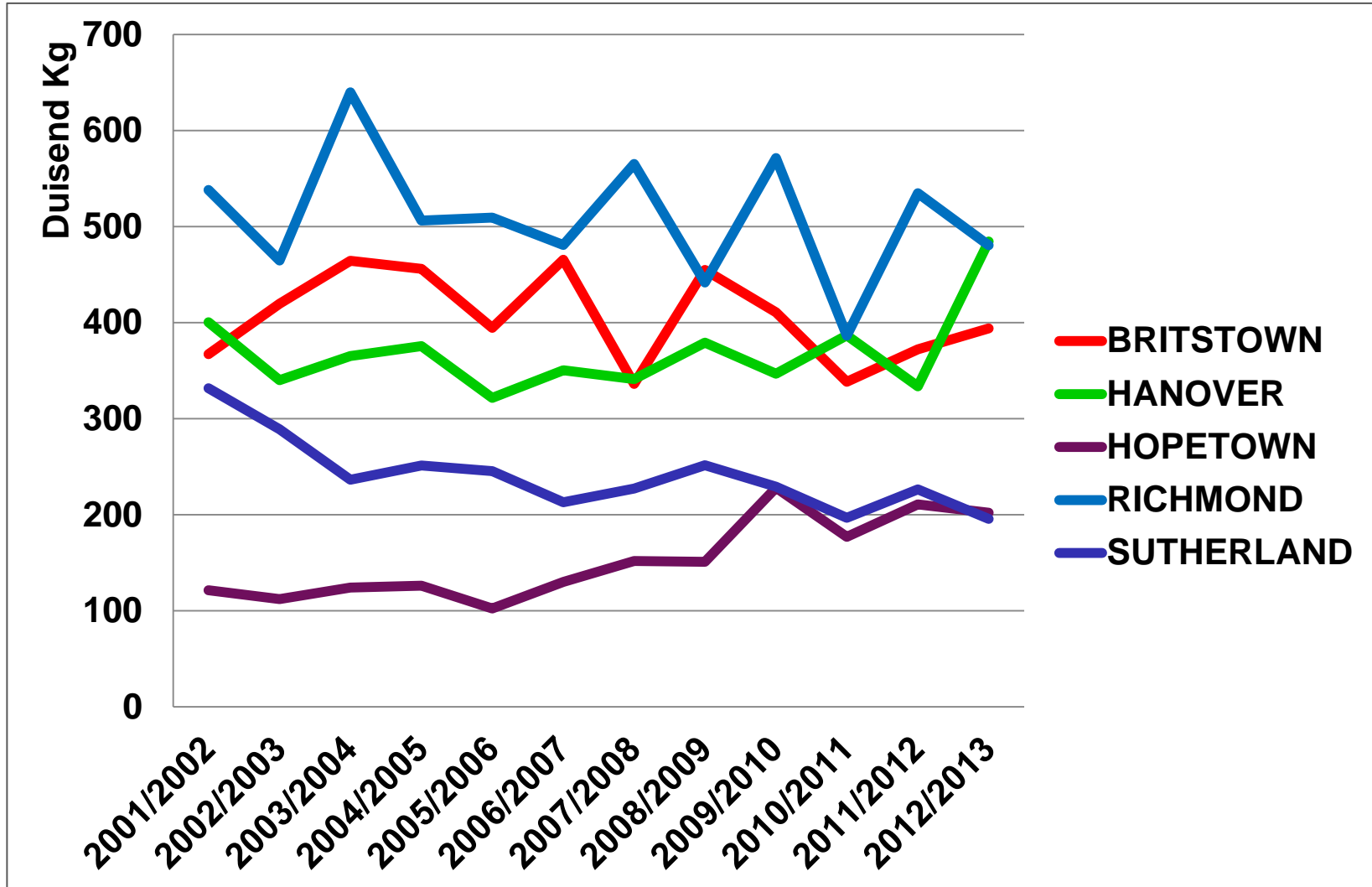
Wolproduksie per hektaar

Noord-Kaap	Wolproduksie	Oppervlakte	Wolproduksie/ha
	Kg	Ha	Kg/ha
VICTORIA-WES	897 637	1 145 728	0.783
CALVINIA	670 341	3 714 596	0.180
COLESBERG	514 814	537 883	0.957
HANOVER	484 579	368 300	1.316
RICHMOND	480 679	715 853	0.671
DE AAR	431 693	322 935	1.337
PHILIPSTOWN	408 784	556 066	0.735
BRITSTOWN	394 038	728 895	0.541
FRASERBURG	345 823	1 155 168	0.299
HOPETOWN	202 150	833 015	0.243
SUTHERLAND	195 699	890 186	0.220
NOUPOORT	187 231	147 001	1.274
CARNARVON	161 241	1 586 406	0.102
PRIESKA	78 174	1 409 933	0.055
WILLISTON	68 523	1 332 231	0.051

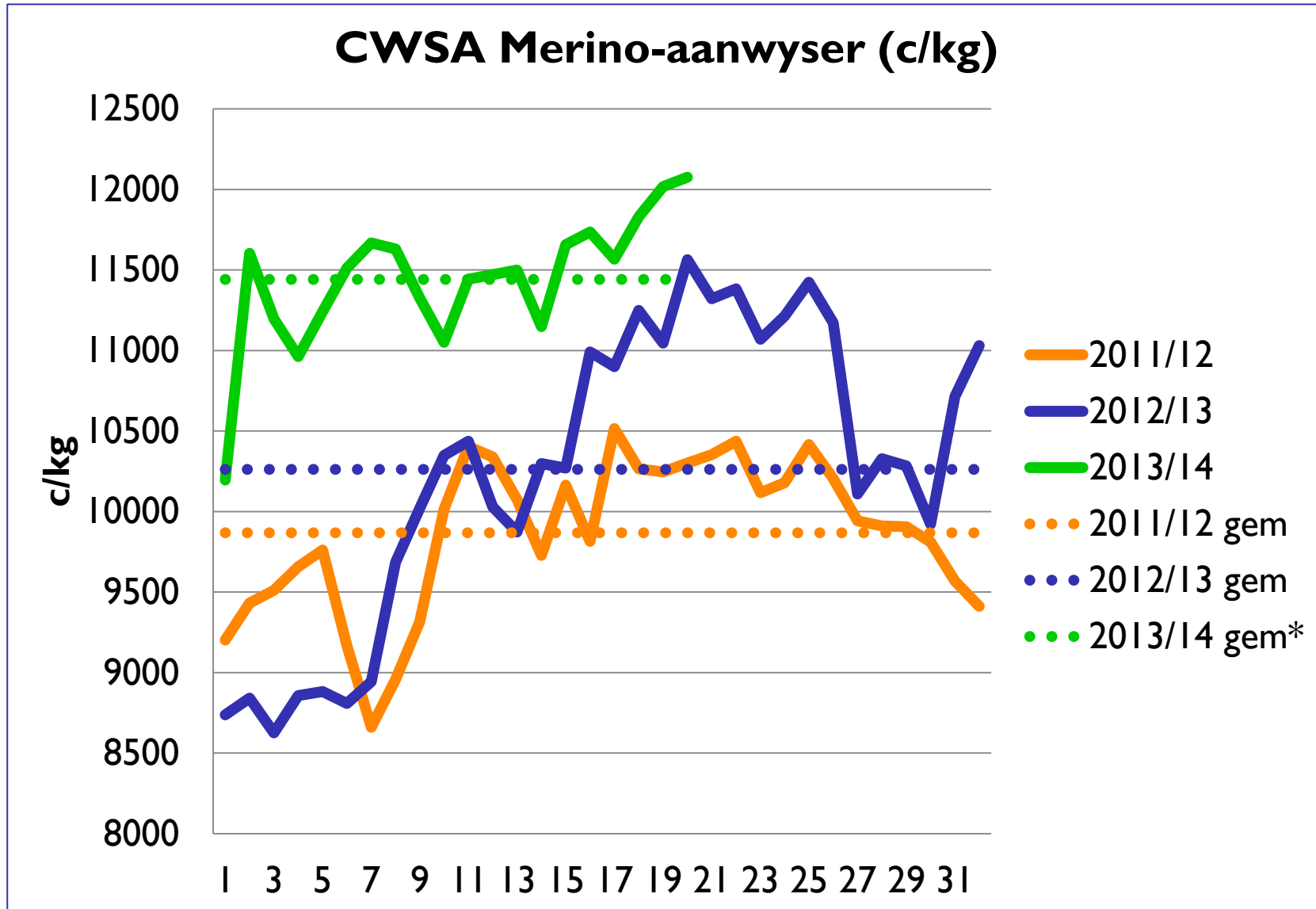
Distrik wolproduksie



Distrik wolproduksie



CWSA Merino-aanwyser 2012/2013



BAIE DANKIE!

