



WOLBOER WOOL FARMER



*This e-newsletter is compiled from sources that are deemed reliable.
However, the publisher accepts no responsibility for any errors or the effect of any decisions based on this publication.*



Januarie/January 2016
NWKV Nuusbriëf 35 / NWGA Newsletter 35

CMW is die hoofborg van hierdie nuusbriëf.

Foreword



Welcome to the first newsletter of 2016. Although the first month is already history, I wish all our readers a prosperous and blessed year. Travelling through large parts of the country over the festive season, I was appalled at the effects of the drought on our country's farmers. I was however, just as touched by how businesses, civil society and ordinary citizens were united in assisting the victims in the drought-stricken areas.

Many of these areas were blessed with some rain over the past month and this affords farmers the opportunity to plant some feed crops for winter feed. Read more about essential management practices in times of drought and which cultivars to plant now.

On a positive note, at the first wool auction of 2016 the wool market traded 14,3% higher and the Cape Wools Merino Indicator increased by a surprising 2 016 points to close at a value of R161,61 (clean). On the Australian market the indicator gained 3,1%. The Cape Wools All Wool Indicator strengthened by 13,8%.

This is the largest recorded increase from consecutive auctions in the last five seasons and traders commented that the excellent competition between the buying houses for all the types of wool on offer combined with the plummeting rand had driven the market to its record high. This will hopefully make a valuable contribution to wool producers struggling as a result of the effects of the drought.

The favourable market maintained its momentum and strong demand for wool absorbed the very large quantity of wool on offer at the following auctions.

Inform us about events in your area or if you want to receive the newsletter. Contact Karen Grobler at 082 774 7008 or send an e-mail to karen@agricconnect.co.za or Bonita Francis nwga@nwga.co.za or call 041 365 5030.



Remember to visit our Facebook page.

The link is <https://www.facebook.com/pages/NWGA/679678912058277>



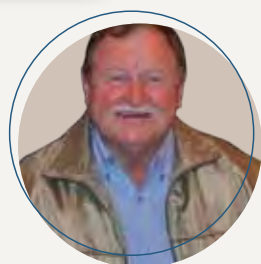
1. Katastrofedekking goedkoper vir NWKV-lede
2. Bom Louw bedien ook Mpumalanga
3. Plant nou voer vir komende winter
4. Welcome to new wool appraiser
5. Why does immunisation sometimes fail?
6. Jeug by Oos-Kaap Landbouskool baat by NWKV-opleiding
 - Skaapskeer as sport
 - Bestuur en uitbrei van wolskape in Oos-Kaap
7. Voorkom poliëstersakbesoedeling in wol
8. Finansiële bestuursmaatreëls midde in 'n rampdroogte-tydperk
9. Save the date
10. Survey by OBP
11. RIP Mr Matshaya
12. Shoot for the second photo competition
13. Ent nou teen Slenkdalkoors

1 Katastrofedekking goedkoper vir NWKV-lede

Die NWKV het 'n bekostigbare versekeringsprodukt in samewerking met Hollard Versekering vir wolskaapboere beding. Lede van die NWKV kan nou katastrofedekking vir hul skape kry teen meer bekostigbare tariewe om hul ten tye van rampe teen algehele verliese te beskerm. Die versekering is ook aan nie-lede teen 'n hoër tarief beskikbaar. Die dekking sluit onder meer die verlies van wolskape weens brande, storms, vloed, weerlig, hael, sneeu en verkluming in. Beperkte dekking vir die vervoer van skape na en vanaf die skeer-lokaal is ook ingesluit. Aansoekvorms en verdere inligting is op die NWKV-webwerf beskikbaar by www.nwga.co.za.



2 Bom Louw bedien ook Mpumalanga



Bom Louw gaan buiten KwaZulu-Natal en Oos-Vrystaat, ook wolprodusente van Mpumalanga bedien. Bom is tans in Harrismith gestasioneer. Tydens 'n vergadering met die NWKV en provinsiale leiers van KwaZulu-Natal, Oos-Vrystaat en Mpumalanga is predasie, veediefstal, mynbou en grondhervoming as die prioriteite uitgelig.

Wolboere in Mpumalanga word versoek om Bom se aksies te ondersteun. Hy beplan om studiegroepe in Chrissiesmeer en Dullstroom te stig, 'n predasie-opleidingskediule vir Mpumalanga op te stel en drie predasiemonitorplase as voorbeelde te gebruik. Hy beplan verder ook ekstensiewe aksies vir veediefstal, wat opleiding van aanklaers, boere en lede van die SAPD-veediefstaleenhede insluit. Die departement van justisie en SAPD moet nog toestemming gee vir die opleiding. Die betrokkenheid van TLU SA en Mpumalanga Landbou by die veediestalforum is ook benadruk.

Voordat Bom 11 jaar gelede by die NWKV begin werk het, was hy vir agt jaar die akademiese hoof by die Laeveld Landboukollege in Nelspruit en vir 27 jaar 'n dosent en navorser by Glen Landboukollege, buite Bloemfontein.

3 Plant nou voer vir komende winter

Dit het begin reën oor dele van die somersaaigebiede, maar in die meeste gebiede is dit nou te laat om grane aan te plant. Tog is daar steeds tyd om vir voer vir die komende winter voorsiening te maak. Eenjarige weidings soos voersorghums, voersorghumhibriede, sorghum x Soedan-hibriede en selfs tef (en tefmengsels) kan oorweeg word. Plant sorghumkultivars wat 'n fyn struktuur het en smaaklik is. Praat met 'n plaaslike saadhandelaar oor die beste kultivars om nou aan te plant. Luister ook na die onderhoud wat RSG Elsenburg Forum met Louis du Pisani op 22 Januarie gevoer het by <http://www.elsenburg.com/radioelsenburg/2016/R160122.mp3> (luister vanaf 7:28 minute).



4 Welcome to new wool appraiser

Cape Wools SA (CWSA) has contracted the services of Tony Reid as official wool appraiser for the wool industry.

His career in the wool trade began in 1953 after he left school. There were many career options available in those years, but wool was and has always been his first love. He learned the hard way and was a learner buyer who had to serve a five-year apprenticeship before he was trusted to evaluate wool correctly. He worked for various companies, but spent 35 years at an Italian firm that specialised in good-quality wool and mohair for the European market.

Reid and his wife travelled for 10 years, but the call for his home country became too strong and he returned to Port Elizabeth.

He was thrilled when CWSA approached him for the position as he has had a love affair with wool for over 50 years and never regretted having been involved in this noble trade.



5 Why does immunisation sometimes fail?

Drs Jan du Preez and Faffa Malan examined the reasons why no vaccine provides 100% protection to a herd or flock. An article in the *Farmer's Weekly* gives reasons why immunisation is not always effective and farmers and the product itself, come under the spotlight.

Mistakes made during vaccination may lead to weak immunity or none at all and include:

- giving an insufficient vaccine dosage
- vaccinating at the wrong age
- vaccinating during a disease outbreak
- neglecting to give a booster
- administering live bacterial vaccines and antibiotics
- administering more than one vaccine at the same time
- mixing different vaccines in a syringe.

▶▶▶ Read the full article on the NWGA website.



6 Jeug by Oos-Kaap Landbouskool baat by NWKV-opleiding

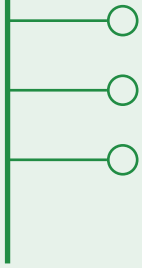
Die Landbouskool Winterberg in die Fort Beaufort-distrik in die Oos-Kaap en die NWKV het saam 'n strategie uitgewerk om die skool se wolskaapvertakking te verbeter. Skoolhoof, Fred Every, is baie gefokus om die skool se landbou-afdeling uit te brei.

Aangesien Winterberg uitstekende infrastruktuur vir skeer- en wolklasopleiding het, is besluit om 'n skaapskeerdemonstrasie in Februarie te hou. Daar gaan verder met boere in die omgewing onderhandel word oor die beskikbaarstelling van hul vee vir opleiding aan Graad 10-leerders wat landbou as vak neem.



Skaapskeer as sport

Skaapskeer as sport wat op interskole-vlak aangebied gaan word, is op die kaarte. Skaapskeer is 'n fisieke aktiwiteit en seuns en dogters sal op vele terreine getoets en ontwikkel word. Izak Klopper, bestuurder van skeerderopleiding by die NWKV, is opgewonde oor die toekoms van jong skeerders en wolklassers in Suid-Afrika en glo dit kan werksgeleenthede skep. Leerders wat ná Graad 12 skaapskeer as 'n loopbaan oorweeg en oorsee wil gaan skeer, kan met die gunstige wisselkoers, goeie geld verdien.



Bestuur en uitbrei van wolskape in Oos-Kaap

Kobus Grobler, NWKV-produksie-adviseur, gaan die wolskaapvertakking uitbrei deur 'n gesondheidsprogram in samewerking met Zoetis op te stel asook 'n kuddebestuursprogram. Die Landbouskool Winterberg het aangeplante weidings onder besproeiing en is dit 'n ideale geleentheid om die finansiële posisie van die skool te verbeter. Terselfdertyd word tyd spandeer aan opleiding in die gemeenskap.

7

Voorkom poliëstersakbesoedeling in wol

kykNET se *Die Groot Ontbyt* het 'n TV-onderhoud met Leon de Beer gevoer oor die rampspoedige gevolge van poliëstersakbesoedeling in wol, wat die bedryf genoodsaak het om boetes teen hierdie tipe besoedeling in te stel. Hier gee hy riglyne wat wolprodusente kan volg om poliëstersakbesoedeling te voorkom.

- Produsente word aangeraai om self in die skeerhuis betrokke te raak seker te maak dat geen besoedeling plaasvind nie.
- Sorg dat alle potensiële bronne van besoedeling vóór die skeerseisoen uit die skeerhuis verwyder word. Dit sluit poliëstersakke, baaltou en ystervoorwerpe in.
- Maak seker dat die arbeid wat help met skeer, wolklas en verpakking goed opgelei is vir die taak.
- Gebruik papier as skeiding in split-of binbale – beslis nie poliëstersakke nie. Maak seker dat die baal duidelik aan die buitekant gemerk is, selfs met 'n groot kruis!

Van die makelaars voorsien reeds papier saam met wolsakke wat as skeidingsmateriaal gebruik kan word.

’n Boete van R1 500 sal gehef word indien poliëstersakbesoedeling in makelaars se store met behulp van die Woltoetsburo ontdek word. Indien poliëstersakbesoedeling egter nie in makelaars se store gevind word nie, maar eers in die finale bestemming oorsee, is die boete R10 000.

Kyk na die volledige onderhoud op <https://www.youtube.com/watch?v=2FZKDUuSqug>.



MAXIMIZE return on your investment.



100% targeted communication to ALL wool producers and stakeholders!



Wool producers must make money. With this in mind *Wolboer/Wool Farmer* print and digital magazine is the only dedicated and 100% targeted publication for the South African Wool Industry and is the official voice of the NWGA.

Advertising your **products, services and auctions** will give you maximum exposure and targeted media coverage. Your message is sent to thousands of farmers, wool producers, and industry stakeholders. We make it simple to get your message out quickly and effectively.








Please contact Ilse Liveris and her team to discuss targeted advertising solutions to suit your needs.

- 012 843 5717 | 072 708 4401
- ilsel@agricconnect.co.za

8

Finansiële bestuursmaatreëls midde in 'n rampdroogte-tydperk

Wanneer kontantvloei onder druk is, moet die volgende stappe oorweeg word:

-  Doen kontantvloei-beplanning vir die onderneming saam met 'n rekenmeester vir minstens die volgende 12 maande asook 'n behoorlike begroting vir persoonlike finansies.
-  Let veral op die groot vyf bestedings (uitgesluit voer) soos arbeid, brandstof, herstel- en onderhoudskoste, elektrisiteit en korttermynversekering. Raak ontslae van onproduktiewe arbeid, alhoewel 'n droogte dikwels meer arbeid verg.
-  Wees pro-aktief deur u bankbestuurder te sien as dit blyk dat u nie u finansiële verpligting rakende leningsterugbetalings kan nakom nie. Onderhandel die volgende maatreëls:
 - Delg vir die interim net rente en nie kapitaal nie.
 - Verleng die terugbetalingstermyn(e).
 - Konsolideer veral kort- en langtermynlenings in 'n enkele langtermynlening.
-  Raak ontslae van wit olifante op die plaas.
-  As die boer by of naby aftrede is en geen erfgename het nie, kan hy oorweeg om die boerdery te staak. Oorweeg die beste alternatiewe tussen verkoop tydens 'n droogte teen maandelike swak pryse vir grond en vee versus aanhou boer deur die droogte en sodoende 'n ekstra finansiële las op te bou wat later verhaal sal moet word vanaf beter grond- en veepryse.

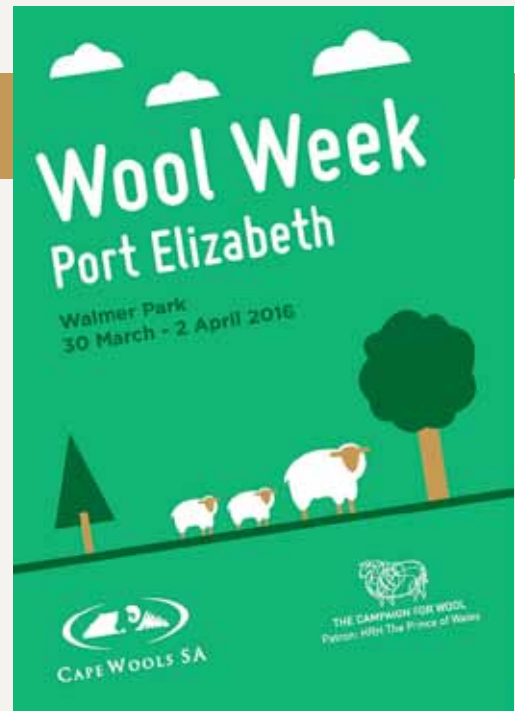
Die volledige artikel is op die NWKV webtuiste -

<http://www.nwga.co.za/images/downloads/Bestuurmaatreels.pdf>



9 Save the date

Save the date and follow the path of wool in South Africa as presented during Wool Week Port Elizabeth from 29 March until 2 April 2016. Walmer Park Shopping Centre will host beautiful home and textile designs in wool and the cream of the Merino breed will be on show at the adjacent D F Malherbe High School. Follow the Cape Wools Facebook page at <https://www.facebook.com/Cape-Wools-SA-525332340859510/> for event details and information.



10 Survey by OBP



OBP conducted a survey during the month of January 2016 with the purpose to identify areas where OBP can improve its services. Producers were requested to complete the survey and raise issues with OBP. If you have not yet completed the survey, please click here. <http://www.obpvaccines.co.za/survey>



11 RIP Mr Matshaya



The NWGA has learnt of the tragic death of Mr Z D Matshaya in January when he was knocked over on the road between King Williams Town and Middle-drift. Mr Matshaya served as chairman of Region 21 wool growers for more than 10 years and was also vice-chairman of the Interregional Committee. He also represented communal farmers on NWGA forums and structures.

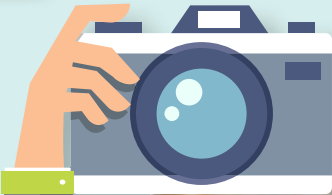
A statement dating back to 2007 where he applauded the NWGA ram project was recorded in a document:

"The ram project has long achieved its purpose! As it was named Genetic Improvement Scheme, it has successfully improved our flocks in size and in numbers. Twins have been produced and the quality of wool is improving season by season. This industry is the only gold mine we have in the province."

Our deepest condolences to his family. May God comfort them in this grieving and sorrowful time.

12

Shoot for the second photo competition



Following the very successful photo competition last year, with 178 entries and the winning image of Frans Stottelaar grabbing the R5 000 prize money, the NWGA has decided to launch a second competition.

This year there will be three prizes with the winner receiving R6 000, the runner-up R3 000 and the third-prize winner receiving R1 500. All inspired photographers are invited to take part in the "Capturing the wool sheep" photo contest and to send their images to Bonita Francis at nwga@nwga.co.za before 15 May 2016. Winners will be announced at the 2016 National Congress.

13

Ent nou teen Slenkdalkoors

Dr George de Kock, voorsitter van Cape Wools SA, het in sy hoedanigheid as veearts, vriendelik versoek dat produsente in Boesmanland en die Noord-Kaap hul Slenkdalkoorsinenting op datum bring. Dit kom na aanleiding van gesprekke wat hy met mede-veeartse gehad het wat 'n risiko vir Slenkdalkoors in hierdie gebiede waarneem ná die goeie reën. Hierdie gebiede toon ook meer weerstandigheid teen Slenkdalkoors as die res van die land.





FEBRUARY				
1	KWAZULU-NATAL	Regional meeting	Luneburg	Jean Visser: 058 622 1511, Bom Louw: 082 652 2243
2	“	Regional meetings	Dundee	
3	“	Regional meetings	Moorivier/ Bergville	
4	“	Regional meetings	Underberg/ Cedarville	
9-10	NORTHERN CAPE	Congress/ Management meeting		Fanie Dippenaar: 082 561 2732, Gawie van Wyk: 083 270 3161
10-13	WESTERN CAPE	Small-scale farmers tour to Port Elizabeth		Tania Lusse: 028 212 3160, Jannie Fourie: 083-564 1105
17	“	Regional meeting	Laingsburg	
18	“	Regional meeting	Swellendam	
24	“	Regional meeting	Porterville	
25	“	Regional meeting	Malmesbury	





CMW/OVK DIENSTE

- Tegnieuse velddienste
- Skeerdiens
- Finansiering
- Handelsdienste
- Bemarking van wol
- Bemarking van sybokhaar
- Lewendehawe en eiendom
- Kuddebestuursopleiding
- Abattoir

CMW • Tel 041 406 7500
— info@cmw.co.za —

OVK • Tel 051 923 4500
— ovk@ovk.co.za —



SAAM

bereik ons meer

— ◆ —
TOGETHER

we achieve more

